



# Investing Transportation Funds in More than Roads

Alliance for Community Trees  
Green Infrastructure Summit and Urban Trees Forum  
Congressional Briefing  
May 2009

Anne P. Canby, President  
Surface Transportation Policy Partnership



# Trees and Transportation

- o Roadside Maintenance
  - o Reducing the amount of grass to mow
  - o Improving storm water management
- o Community Revitalization
  - o Improve environment for private investment
  - o Strengthen local tax base
- o Improving Travel Options
  - o Make roads and streets safer for walking
  - o Provide infrastructure for auto alternatives



# Enhancing Delaware's Highways



Incorporate ecologically sound practices

Utilize uniquely regional plantings

Improve the efficiency of roadside maintenance



# The Monoculture of Grass



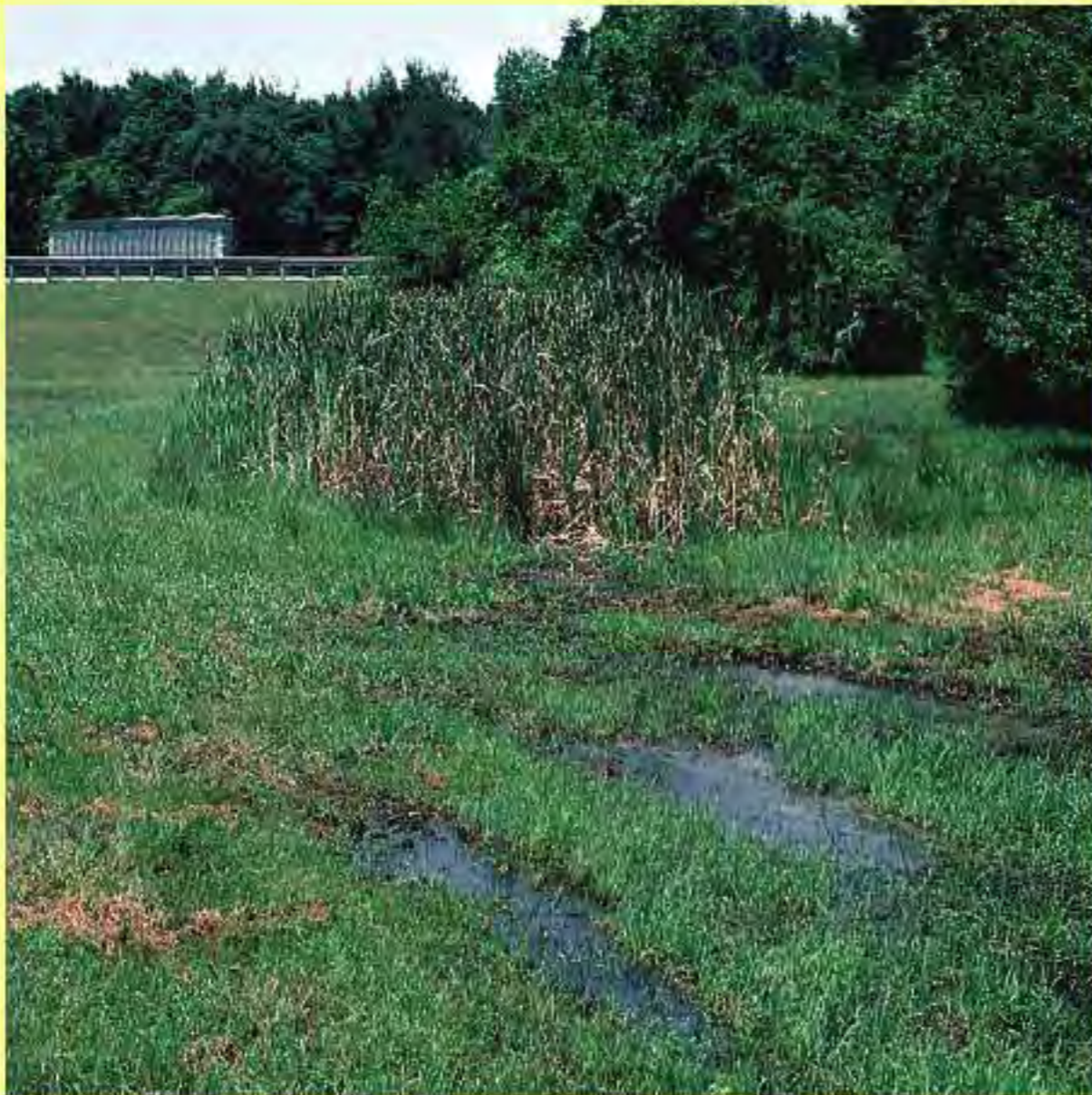


# Reduce Mowing, Enrich the Ecosystem





# Better Ways to Manage Storm Water





# Creating the Landscape





# Controlling Invasive Species





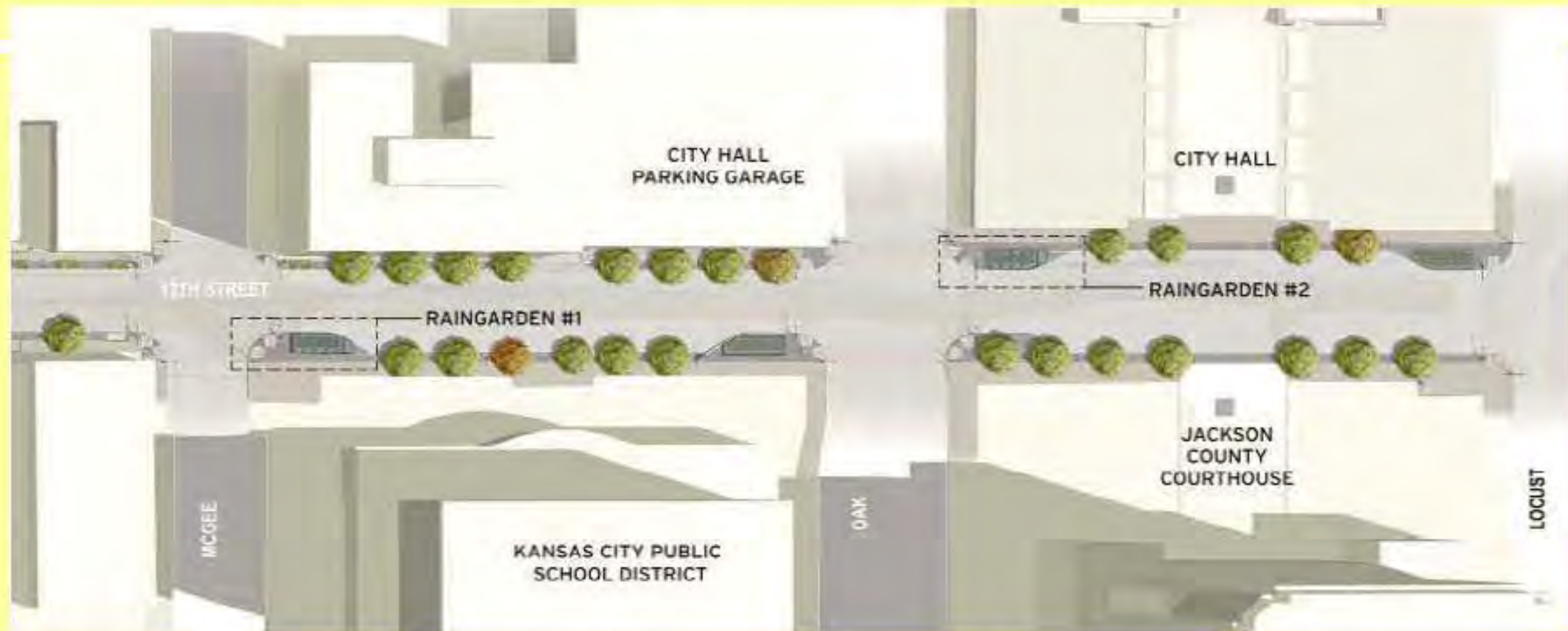
# Improving Stormwater Management



Covington, KN Northern KN SD1 Technical Assistance  
(Kevin Perry, Nevue Ngan and Associates)



## 12<sup>th</sup> Street, Kansas City, MO



Two infiltration “rain garden” bulbs are 300 feet apart in Downtown’s government center, with tree trenches formally aligned along the street.

Image: Jim Schuessler, BNIM Architects



# Enhance Streetscape – Slow Traffic





# Defining a Community's Vision



The photographer simply rotated 180 degrees.



These pictures were taken on the same day, at the same time, at the same place ... at the sidewalk's end;



# Trees: A Tool to Achieve Vision



**Problem: Strip commercial and residential developments were identified as a root cause for the decline of the Village of Livonia, N.Y.**

**NYSDOT-supported capital improvements, such as sidewalks and **tree planting**, have brought the Village closer to achieving its vision.**

**New Vision: Re-establish the Village as the economic and social center of the community**





# Improving the Climate for Private Investment





# Creating Safe, Walkable Environments





# Impact of Trees on Livability





# Trees Make Options More Acceptable





# What Makes Savannah, Savannah?



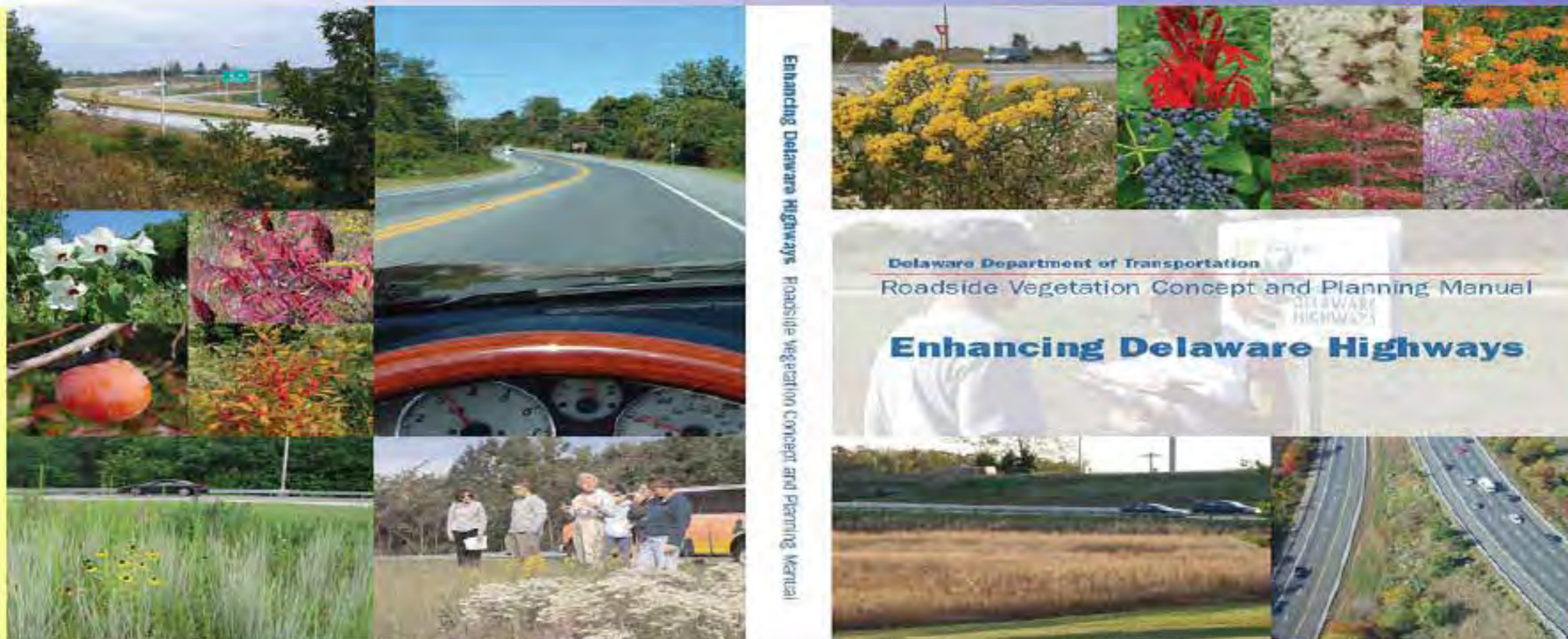


# Where to Find the Money

- o Federal Transportation Funds
  - o Eligible project expense
  - o Independent storm water management eligibility (Sec. 328, Title 23)
- o Environmental Protection Agency
  - o Clean Water State Revolving Fund - about \$5 billion (FY 09)
  - o Drinking Water SRF - about \$1B
  - o Green Street projects eligible under these programs



# Teaching New Practices



Planning and Concept Manual – Design consultation and plant selection



# Some Resources for Green Infrastructure

- o DE DOT

[http://deldot.gov/information/pubs\\_forms/manuals/edh/pdf/edh\\_concept\\_planning.pdf](http://deldot.gov/information/pubs_forms/manuals/edh/pdf/edh_concept_planning.pdf)

- o STPP

<http://transact.org/workshops/20080724-denver/presentations.htm>

- o Project for Public Spaces

<http://www.pps.org/transportation/>

- o EPA

<http://www.epa.gov/owow/podcasts/greenstreetsusa.html>

- o US DOT

<http://www.fhwa.dot.gov/context/>



# Creating a Pleasant Environment for Non-Auto Users

