



Tucson

Clean &

Beautiful

and



# Trees for Tucson

presents



Special Park Projects:

El Paseo de los Arboles

Children's Memorial Park

2008 Park Projects

# El Paseo de Los Arboles



# El Paseo de los Arboles “The Pathway of Trees”



## Background

El Paseo is a commemorative tree planting project which encompasses a mile long section of the Santa Cruz River Park



## Partnerships

El Paseo de los Arboles was conceived by Pima County Parks and Recreation and Tucson Clean & Beautiful./Trees for Tucson, opened in 1996 and completed in 1998

It became a cooperative community effort between

- Pima County Flood Control District
- Pima County Board of Supervisors
- Pima County Illustration Section
- Arizona State Parks Board – Heritage Fund
- Arizona State Lands Department
- The Arizona Forestry Council
- The City of Tucson Transportation Dept
- City of Tucson Parks & Recreation Dept.
- Corporate Sponsors
- DeAnza Trail

## Design



- Each grove is named for a native bird and each native tree has a numbered tile. Individuals purchased trees which were planted in the groves with a name placed on uniquely designed tile walls adjacent to the groves. 600 trees were planted in a area that historically does not have landscape as a priority.
- Policies prior to park opening.

## Purchase, Planting & Commemoration



- Trees were purchased at \$125.00 each, and certificates were sent to the recipients.
- Planting and Dedication Ceremonies biannually.

# Funding & Resources

## Corporate Sponsors

- Tucson Electric Power
- Golden Eagle Distributors
- Bank One, Arizona
- Estes Homebuilding Co.
- Foundations
- Kalamazoo Materials
- State and Federal Grants

## Maintenance

- This park is maintained by  
Pima County Parks & Recreation
- Issues: Vandalism



Public demand for this type of commemorative park far exceeded our expectations and the park was completed in less than three years.

# Children's Memorial Park



# Children's Memorial Park



This park is a fitting tribute to children who have died in our community.

Formerly Edgewater Park, which was destroyed by 1983 flood, the park was rebuilt and rededicated as Children's Memorial Park on November 14, 1987

# Children's Memorial Park



This Memorial Park was created  
In Partnership in 1987 with:

- Pima County Natural Resources,  
Parks & Recreation
- Pima County Flood Control
- Pima County Transportation Dept.
- Compassionate Friends,
- SID
- Mothers Against Drunk Driving
- Crime Prevention League
- Parents of Murdered Children
  
- Includes a sculpture "Omni" which  
was created by children at summer  
camp.

## Gifts & Donations

- Names are engraved on granite walls



- To date, over 1300 names have been engraved on the Walls.



- Also includes a sculpture "The Magic Carpet."



- The park contains a playground with new equipment donated by a grant from Wolslager Foundation.

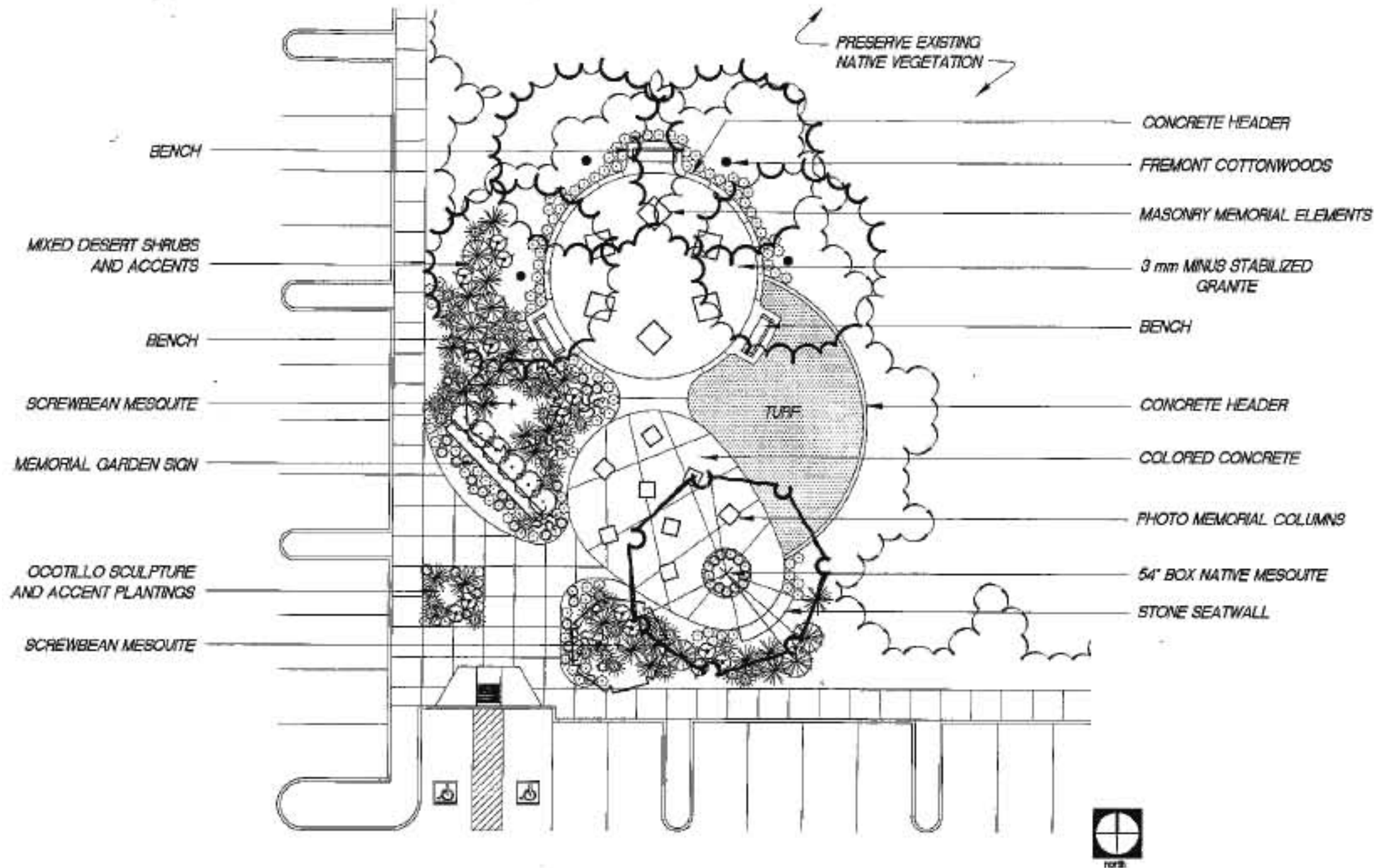
# 2008 Commemorative Tree Park Children's Memorial Park- East



- These parks have been in the planning stage for six years and will be open to the public next year.
- Included will be both a Commemorative Tree park and a Children's Memorial Garden.
- A Hohokum petroglyphic design is planned.



# Design



## CHILDREN'S MEMORIAL GARDEN

ALTERNATIVE 2 : FORMAL LAYOUT WITH MASONRY MEMORIAL ELEMENTS

THE ACACIA GROUP, INC.

SCALE  $\frac{1}{16}'' = 1'-0''$



Materials that will be used in the Memorial Park - East

