

# **The Home Depot Foundation**

Affordable Housing and Trees

Path to Sustainability

Alliance for Community Trees Webinar

February 21, 2008





## **Our Mission**

**The Home Depot Foundation is dedicated to building affordable homes for working families that are healthy to live in and affordable to own.**



# Our Key Messages

- The Foundation defines an affordable home as one that people of limited means can afford to own, operate and maintain over the long-term.
- By incorporating responsible design, each home uses durable and quality materials, is more energy and water efficient, has good indoor air quality, and is overall a safe and healthy space to live in.
- The Foundation is committed to improving the overall health of our communities, which not only includes healthy affordable housing but also the planting and restoration of community trees; the building and refurbishment of community play spaces; and, the revitalization of community schools.



## **Our Key Goals**

- **Increase awareness of the connection among quality affordable housing, adequate green spaces and trees and the overall health and success of our communities.**
- **Increase awareness that the “urban forest” is an untapped resource that can be used to help communities deal with the pollution of our air and water, cool our city streets and improve our overall health.**



## **Our National Partners**

- **Alliance for Community Trees**
- **American Forests**
- **Enterprise Community Partners**
- **Global Green USA**
- **Housing Assistance Council**
- **Local Initiatives Support Corporation (LISC)**
- **National Alliance for Water Efficiency**
- **National Arbor Day Foundation**
- **NeighborWorks® America**
- **U. S. Conference of Mayors**
- **U.S. Green Building Council**



## **Our observations and experience**

- **Nonprofit housing developers and tree groups tend to operate in silos**
- **Tree and affordable housing nonprofits follow a “sector” mentality, as do funding agencies, with resources and commitment devoted to the single interest**
- **There are synergies between developers and tree groups but they have rarely seen the common ground they might occupy**
- **Instead of collaborating, both groups tend to compete over development opportunities and scarce funding**
- **There are benefits to integrating tree planting, land conservation and affordable housing development**
- **Partnerships between the two groups allow them to share skills and reduce risk to any one organization**
- **New funding sources can spring from the pairing of tree planting, land conservation and affordable housing development**
- **By addressing community needs for affordable housing and trees protection together and engaging community members in the process, both groups can forge new public and political support**



# Observations about the current landscape for collaborating

- **Smart growth is prompting new partnerships**
- **Sustainability has moved beyond a mere buzzword to become a way of doing business**
- **Green Building and green certification**
- **Through US Conference of Mayors, mayors are beginning to grasp the connection between trees, housing and healthy communities**
- **Groundswell to inject ecological literacy and sustainability principles into architecture education**
- **National affordable housing intermediaries (Enterprise Community Partners, LISC, NeighborWorks® America, Housing Assistance Council, USGBC LEED for Homes and Global Green USA are requiring developers to incorporate tree and landscaping strategies up front in project design**
- **National Arbor Day Foundation and National Association of Homebuilders' Building With Trees recognition program**
- **Cities are using ecological and economic benefits of trees to guide planning and redevelopment of communities**



**FOUNDATION**

Building Affordable Healthy Homes





**FOUNDATION**

Building Affordable Healthy Homes





Downtown Albuquerque's  
Alvarado Transportation District  
Revitalization Effort: Phase II  
Housing

Prepared by Jonathan Rose  
Companies, Inc.

May 2007

# Silver Gardens Site, From Second Street



# Preliminary Site Plan

(Live/Work to north, Silver Gardens to southeast, and Townhomes to West)



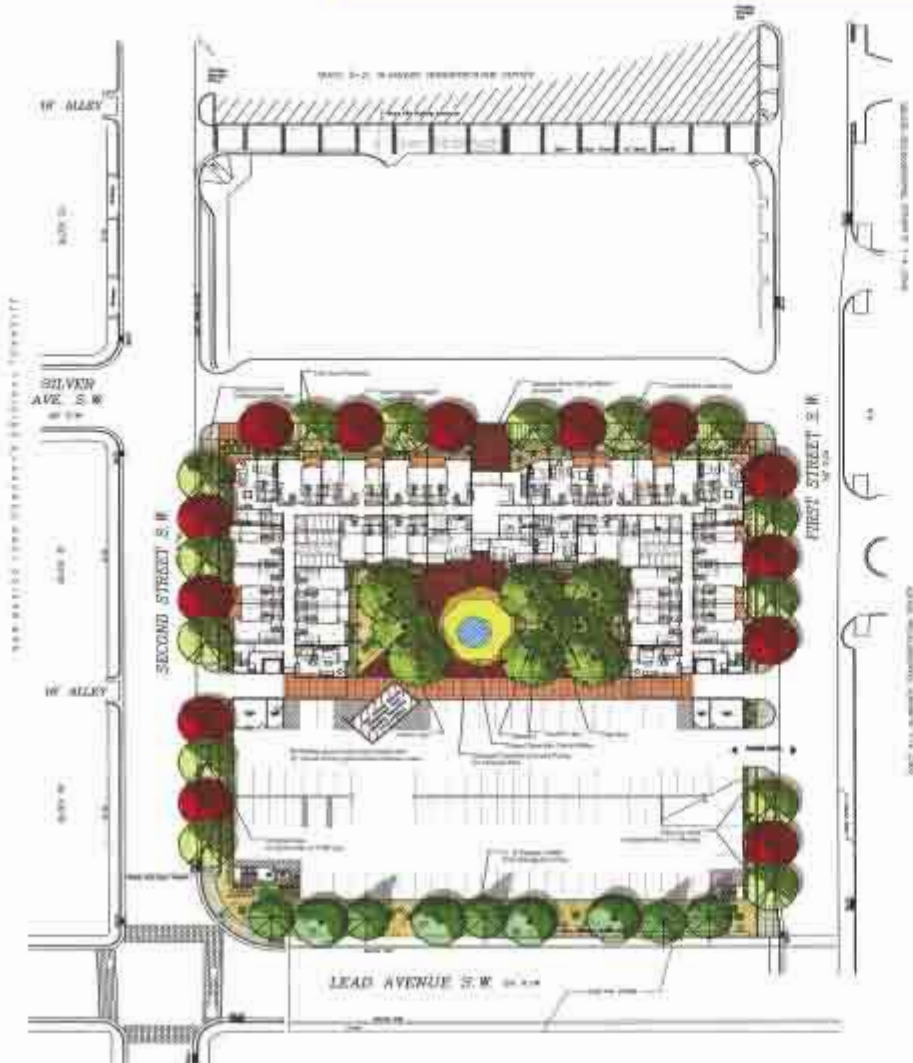
# Site Plan with Silver Gardens in Foreground



05/08/06



**FOUNDATION**  
Building Affordable Healthy Homes



**CONCEPTUAL LANDSCAPE PLAN  
SILVER GARDENS**

Prepared for:  
Dawko Vajr Architects  
1801 1st Avenue SW  
Silver Spring, MD 20910

Prepared by:  
Covance Planning, Inc.  
302 Eighth Street NW  
Bloomington, MN 55401





**FOUNDATION**  
Building Affordable Healthy Homes



SILVER AVENUE ELEVATION



1ST STREET ELEVATION

EXTERIOR ELEVATIONS

SILVER GARDENS





**FOUNDATION**  
Building Affordable Healthy Homes



COURTYARD SIDE ELEVATION



COURTYARD CENTER ELEVATION

COURTYARD ELEVATIONS

SILVER GARDENS



FOUNDATION ASSOCIATES





# FOUNDATION

Building Affordable Healthy Homes



COURTYARD RENDERING

SILVER GARDENS



FOUNDATION





**FOUNDATION**

Building Affordable Healthy Homes



COURTYARD RENDERING

SILVER GARDENS



FOUNDATION





**FOUNDATION**

Building Affordable Healthy Homes





**FOUNDATION**

Building Affordable Healthy Homes





## FOUNDATION

Building Affordable Healthy Homes





## FOUNDATION

Building Affordable Healthy Homes





**FOUNDATION**

Building Affordable Healthy Homes





**FOUNDATION**

Building Affordable Healthy Homes