



***A Case Study in Policy-making with  
public and private partners***



City of Baltimore  
**Recreation & Parks**



# TreeBaltimore Vision

*“By setting a goal of doubling Baltimore’s tree canopy over the next 30 years, we are making sure our children and grandchildren grow up in neighborhoods that are healthy, picturesque and welcoming.”*

*-Mayor Martin O’Malley  
March, 2006*

# Passing the Torch

*“This is not just for now, it’s for the future.*



*Think about the  
generations of people  
who will benefit.”*

*Mayor Sheila Dixon*

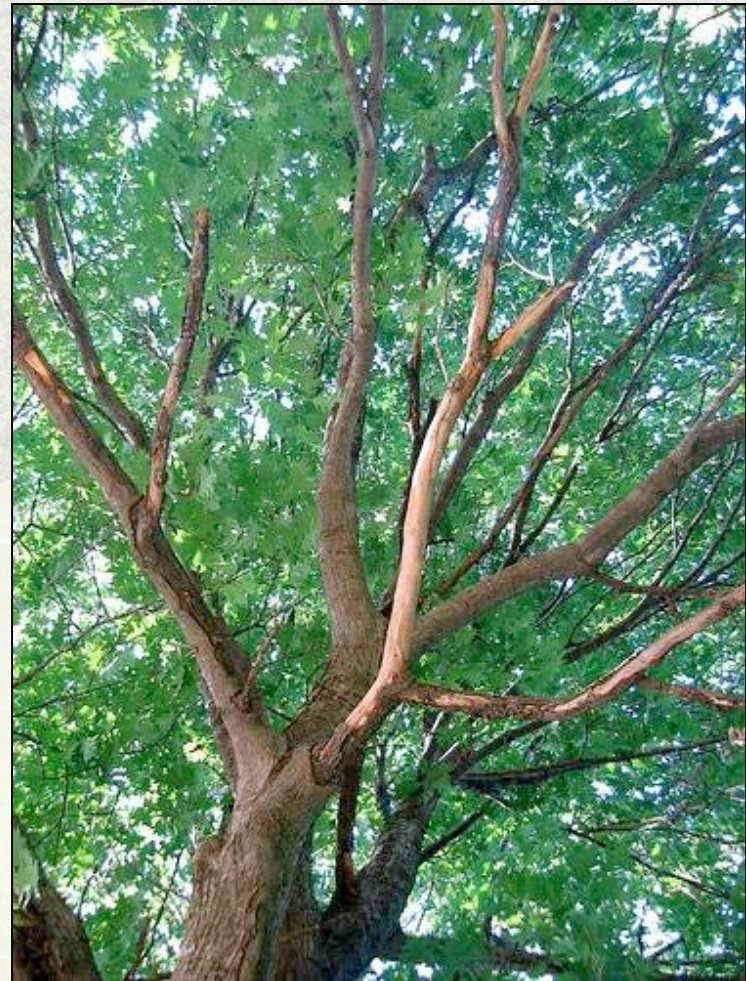
*Arbor Day, April 27, 2007*

# The Tree Canopy Goal

- Current canopy: 20%
  - Canopy goal: 40%
- = 100% Increase!

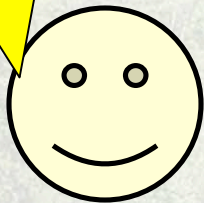


Patterson Park



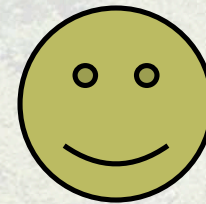
# How Did we Get Here?

**Dept. Natural Resources**



State Government

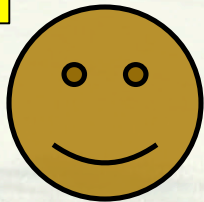
**Parks and People Foundation**



Local non-profit

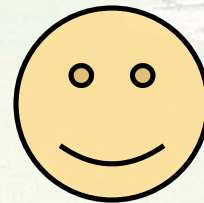


**City of Baltimore**



Local Government

**US Forest Service**



Federal Government

# How Did we Get Here?

## 1. The U. S. Forest Service establishes relationship with Parks and People Foundation

### 1989 **Urban Resources Initiative**

Department of Recreation and Parks

Yale School of Forestry and Environmental Studies

Charge: apply principles of social forestry in Baltimore

### 1990's **Revitalizing Baltimore**

Funded by USDA Forest Service

Parks & People Foundation

Maryland State Forester

### 1997 **Baltimore Ecosystem Study**

Funded by the National Science Foundation

Supported by the USFS NE Research to

Investigate how Baltimore functions as an urban ecosystem

# How Did we Get Here?

## 2. Baltimore UFORE: 1999, 2002

- Average lifespan of tree: 15 years
- 30% of trees live past age 15
- Average Annual Mortality rate: 7%
- Loss in stored carbon at a value of \$340 Million in 30 years

Baltimore's Urban Forest

David J. Nowak, USDA Forest Service

# How Did we Get Here?



1983 Chesapeake Bay Agreement

<http://www.cumberlandcd.com/cbp.html>

# How Did we Get Here?

## 3. Chesapeake Bay Directive 2003

- Urban tree canopy extends the function of riparian forest buffers



[www.seattle.gov/economicdevelopment/biz\\_district\\_guide/biz\\_dist\\_pages/street\\_trees.htm](http://www.seattle.gov/economicdevelopment/biz_district_guide/biz_dist_pages/street_trees.htm)

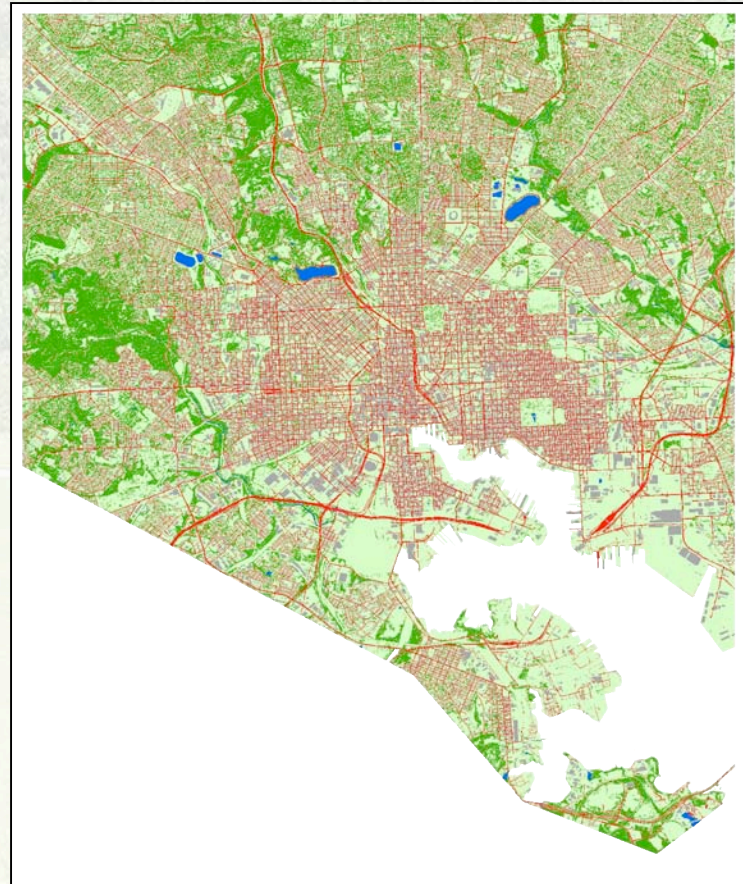
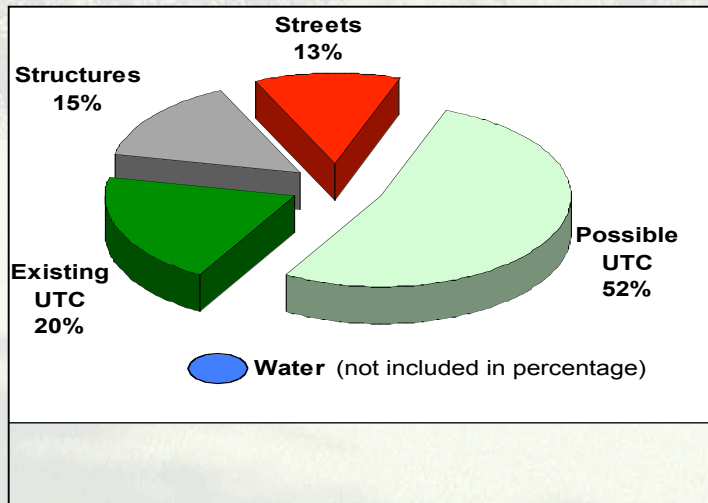
# Chesapeake Bay Directive 2003

- By 2010, CBP will work with 5 communities in each State to Promote tree canopy goals.

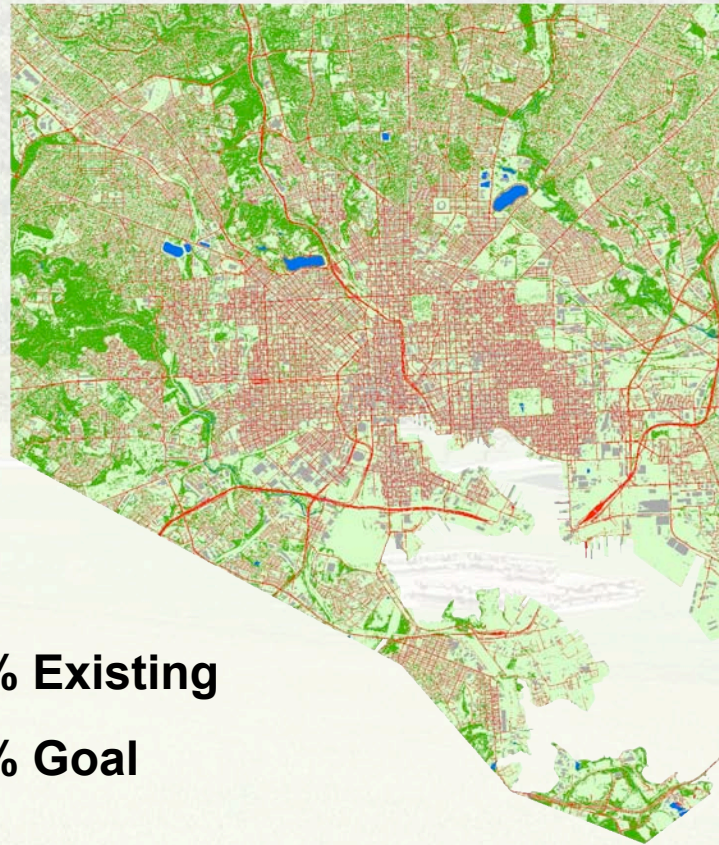
- Baltimore
- Annapolis
- Frederick
- Hagerstown
- LaPlata



# Existing and Potential Tree Canopy



# The 3 P's



Possible  
Probable  
Preferable

**20% Existing**

**40% Goal**

*Authorized use only. Contains data © Claritas 2003.*



# Baltimore Leads the Way



Leakin Park

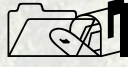
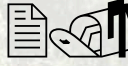
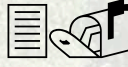

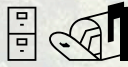



The first city in Maryland to set  
an Urban Tree Canopy Goal



**Phase I:**

**The Urban Forest Management Plan**

# Policy Recommendations

-  Interagency cooperation;
-  Managing public lands with best practices;
-  Tree-friendly urban infrastructure;
-  Suitable tree species;
-  Integrated regulatory framework;
-  Protecting existing trees;
-  **Tree planting on private lands;**
-  **Building capacity**

# TreeBaltimore



Enhancing the quality of life  
for Baltimore's citizens,

- Providing shade;
- Enhancing the landscape; and
- Cleaning our air and water.