

focus + **priority** = outcome



protect

forests from
harm



conserve

working forest
landscapes



enhance

public benefits from
trees and forests

> **PUBLISHED BY**

+ **National Association of State Foresters**

+ **Forest Service, U.S. Department of Agriculture**

MARCH 2009

A snapshot of FY2008 Redesign projects implemented by state and territorial forestry agencies and their partners.

Table of Contents



NASF PRESIDENT’S MESSAGE	3
STATE & PRIVATE DEPUTY CHIEF’S MESSAGE	3
ACKNOWLEDGEMENTS	3
INTRODUCTION	4
NATIONAL THEMES: THREE REGIONAL HIGHLIGHTS	
PROTECT FORESTS FROM HARM	6
<i>Great Plains Invasives Initiative</i>	
CONSERVE WORKING FORESTS	7
<i>Longleaf Pine Ecosystem Corridor</i>	
ENHANCE PUBLIC BENEFITS	8
<i>Forest Infrastructure Tools for Urban Communities</i>	

SYNOPSIS OF FY2008 PROJECTS

Alabama	p. 10	Nebraska	p. 20
Alaska	p. 10	Nevada	p. 21
Arizona	p. 10	New Hampshire	p. 21
Arkansas	p. 11	New Jersey/New York	p. 7
California	p. 11	New Mexico	p. 21
Colorado	p. 11	North Carolina	p. 22
Connecticut	p. 12	Ohio	p. 23
Delaware	p. 12	Oklahoma	p. 24
District of Columbia	p. 12	Oregon	p. 25
Florida	p. 12	Pacific Islands	p. 30
Georgia	p. 14	Pennsylvania	p. 25
Idaho	p. 15	Puerto Rico	p. 31
Illinois	p. 16	Rhode Island	p. 25
Indiana	p. 16	South Carolina	p. 25
Iowa	p. 16	South Dakota	p. 26
Kansas	p. 17	Tennessee	p. 26
Kentucky	p. 17	Texas	p. 26
Maryland	p. 18	Utah	p. 27
Massachusetts	p. 18	Vermont	p. 27
Michigan	p. 18	Virginia	p. 28
Minnesota	p. 19	Washington	p. 29
Mississippi	p. 19	West Virginia	p. 29
Missouri	p. 19	Wisconsin	p. 29
Montana	p. 20	Wyoming	p. 30



America's forests are a strategic national resource, ready with working solutions that can help address climate change, renewable energy, economic development, and job creation. State Foresters have a public trust responsibility for managing and protecting two-thirds of the nation's forestland, which is held in private or non-federal public ownership.

The Forest Service's State and Private Forestry programs leverage the capacity of state agencies and their partners to ensure that private forest landowners receive the best technical, educational, and financial assistance to meet their ownership objectives. Federal investment in these programs helps state foresters reduce wildfire risks and drive down suppression costs, respond to threats of insects,

disease and invasive plants, and provide assistance to forest landowners and communities to manage, maintain, and improve their forests and green spaces.

Now in its second edition, this Redesign Report Card gives a deeper view into the process we launched two years ago to enhance the way we deliver S&PF programs. The stories in the following pages bring you another step closer to the results we are seeing on the landscape and in our communities. From assessments of each state's forest resource to strategies for addressing the challenges in the highest priority areas, Redesign has brought a number of innovations to our work. These approaches help to ensure the ability of the nation's forests to sustain and enrich the well-being of our citizens, communities and the national interest for generations to come.

U.S. Forest Service State & Private Deputy Chief's Message > Jim Hubbard



I am proud of the work we have accomplished. As partners with the National Association of State Foresters we are seeing the results of all the hard work and dedication of so many individuals.

The success of the Redesign effort has given me a cause for optimism. This edition of the Redesign Report Card offers an opportunity to share with you the reasons for my sense of optimism:

- States have begun their statewide forest resource assessments and statewide resource strategy plans

- The development of the national assessment is near completion and will be a partner-accessible geospatial web-based decision support system (or tool) that can be used to support state, regional, and national efforts and demonstrate results
- In FY08, 124 competitive projects were funded leveraging nearly \$23 million. Cross boundary landscape scale delivery is being accomplished.

We will continue to support each other, the work of the Redesign committees, and our partners so we can continue the accomplishments of landscape-scale planning and projects. Our collaboration is validating progress demonstrating results.

Acknowledgements

The Redesign Implementation Council (RIC) is responsible for providing executive leadership for implementing Redesign and guiding the activities of several related interagency working groups.

The NASF members of the RIC are:



- Leah MacSwords, NASF President, Kentucky State Forester
- Steven Koehn, NASF Vice President, Maryland State Forester
- Jeff Jahnke, NASF Treasurer, Colorado State Forester
- Larry Kotchman, NASF Past-president, North Dakota State Forester
- Jay Farrell, NASF Executive Director

The U.S. Forest Service members of the RIC are:



- Jim Hubbard (S&PF Deputy Chief)
- Robin Thompson (S&PF Associate Deputy Chief)
- Harv Forsgren (Intermountain Regional Forester)
- Dave Cleaves (R&D Associate Deputy Chief)
- Peg Polichio (S&PF Deputy Director, Regions 1 and 4)



A healthy forest does not happen by accident.

America's state and private forests are served by a sophisticated, ecologically responsive suite of programs that foster stewardship and sustainability.

Encompassing two-thirds of the vast landscape of America's forests, state and private lands provide public benefits such as clean air, clean water, wildlife habitat, outdoor recreation, and about seventy percent of the nation's wood supply. The management of these lands is vital to our nation's health and economy. State Foresters have the primary authority to help local governments and nearly ten million family forest landowners manage and protect state and private forests under a wide variety of goals and circumstances.



The State and Private Forestry (S&PF) organization of the U.S. Forest Service helps to ensure that forest landowners have the best technical, educational, and financial assistance available to help them achieve their objectives in an environmentally beneficial way. This federal investment leverages the capacity of state forestry agencies

and their partners to manage state and private lands and produce ecological, social and economic benefits for the American people.

CHANGES > CHALLENGES

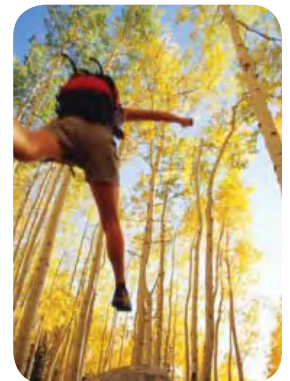
Today there are increasing pressures to do more with less, as budgets shift and federal priorities change. Regardless of ownership, forests across the country are experiencing significant challenges to ecosystem health: tree mortality is on the rise due to disease and invasive pests; wildfire continues to increase in size

and intensity; ecosystems struggle to adapt to climate change disturbances; and forests are being permanently converted to non-forest uses at a rate of 1 million acres per year. In the face of steep funding cuts and delays, State Foresters are meeting today's challenges and helping to prepare for the future by finding creative new ways to prioritize their agency's programs and best utilize available resources.

RESULT > REDESIGN

Conceived in 2007, "Redesign" was an acknowledgement that the existing structure of federally-funded State and Private Forestry programs was struggling to address challenges at this kind of scale or pace. Redesign is a new approach within State and Private Forestry that is improving the ability to identify the greatest threats to forest sustainability and accomplish meaningful change in high priority areas.

While continuing to implement the broad spectrum of programs that encompass State and Private Forestry, the U.S. Forest Service and the National Association of State Foresters are applying progressive competitive strategies to a portion of this federal allocation. This approach helps to address current forestry opportunities and challenges on-the-ground while demonstrating to Congress, state legislatures and others the value of a public investment in state and private



landscapes. “Redesigned” State and Private Forestry competitive projects are administered under a model of granting funds to result in a targeted, positive impact on the landscape while at the same time leveraging state capacity with strategic federal dollars.

FOCUS + PRIORITY = OUTCOME

Framed within the concept of “focus + priority = outcome,” Redesign competitive projects identify issues and landscapes of national importance that address three national themes:

1. **Protect Forests from Harm**
Actions under this theme aim to reduce threats to and restore forest health and productivity associated with uncharacteristic wildfire; insects and disease; and invasive species.
2. **Conserve Working Forest Landscapes**
Actions under this theme focus on reducing the rate of conversion of forested landscapes to other uses and informing decisions about which landscapes should be conserved as working forests to optimize public benefits.
3. **Enhance Public Benefits from Trees and Forests**
Actions under this theme focus on enhancing the suite of public benefits associated with trees and forests such as: clean air and water, fish and wildlife habitat, open space, outdoor recreation opportunities, renewable materials (building materials, paper products, bio-energy, medicinal products), economic attributes (employment, reduced heating/cooling costs, enhanced property values, reduced water storage and treatment costs, reduced flood risk and impacts, reduced fire suppression costs and impacts), climate change buffering, and reducing the risk to communities from wildfire.



While states are nearing completion of their assessments and strategies, development of a National Assessment is also underway as part of the Redesign process. When complete, it will offer a geospatial web-based decision support system to guide state, regional, and national efforts. This product will put programs and resources in context on a national scale and will be used to demonstrate and communicate results to partners in Congress and other federal agencies.

COMPETITIVE PROCESS > FY2008

Rebalancing the allocation of federal funds to states through a highly competitive application process versus formula funding alone is a trend that has been taking place for a number of years across a number of federal agencies and international organizations. Redesign’s restructuring of the S&PF program facilitated this shift to a mix of competitive and formula funding (currently 15% competitive) with the aim of prioritizing project and program innovation while still addressing the sustainability of a state’s capacity to administer long-term programs. For FY2008, 124 projects were funded through the \$19.53 million federal competitive allocation that leveraged \$22.95 million in 47 states, islands and territories.

FOCUS > INNOVATION

As Redesign has shifted from concept to implementation, the planning and analysis that went into developing the process is now unfolding in interesting and positive ways on the landscape. The projects funded through the FY2008 competitive process have been set into motion and their strategic activities paint a compelling picture of how they are answering the challenges faced by our nation’s forest lands while meeting the needs of society. The next several pages of this Report Card offer a synopsis of three different regional projects and their innovative approaches to each of the three national themes. The rear section provides a comprehensive catalogue of all FY2008 projects, with summaries of their goals, leveraged dollars, and engaged partners.



MILESTONE > 2008 FARM BILL

The Food, Conservation, and Energy Act of 2008, also known as the 2008 Farm Bill, was enacted into law in June 2008 and provided new guidance on how the State and Private Forestry program will identify and prioritize national, regional, and state forest management goals. Within two years after enactment, each state is required to complete a State Assessment

and Resource Strategy, which provide an analysis of forest conditions and trends in the state and delineates priority rural and urban forest landscape areas, as well as provide long-term strategies for investing state, federal, and other resources to where it can most effectively stimulate or leverage desired action and engage multiple partners.



Representing fifteen percent of the State and Private Forestry allocation, Redesign projects are driving innovation and resourcefulness throughout the vast scope of S&PF by focusing on issues and landscape of highest priority. Investment in these priority areas and thoughtful action plans today will shape forest land use on a scale and in a way that optimizes public benefit from trees and forests for both current and future generations. ■

Protect Forests From Harm > Great Plains Tree and Forest Invasives Initiative

Multi-state initiative continues preparing the Great Plains for invasive insects

Emerald ash borer (EAB) continues its spread across the United States, wreaking havoc on community and rural forests and proving eradication efforts unsuccessful. In addition to expanding its presence in states where it has already been

The appearance west of the Mississippi River puts EAB at the doorstep of the northern plains and brings new urgency to the work of the Great Plains Initiative.

confirmed, EAB has also arrived in Wisconsin and Missouri. The detection in Missouri is the first appearance west of the Mississippi River, putting EAB at the doorstep of the northern plains and bringing new urgency to the work of the Great Plains Tree and Forest Invasives Initiative (GPI).

Funded by over a million dollars in federal funding and matched with state dollars, the Great Plains Tree and Forest Invasives Initiative has given state forestry agencies in Kansas, Nebraska, North Dakota and South Dakota the opportunity to work together over the past two years to prepare for the arrival of EAB and other invasive species in the northern plains. In 2008, states made strides in assessing the region's tree resources, developing educational materials and coordinating a citizen-based monitoring program.

INVENTORY > IDENTIFICATION

EAB is a highly invasive exotic insect that attacks and kills all native ash species. It is spread primarily through the transport of infested nursery stock and firewood. Since its discovery near Detroit in 2002, EAB has been found throughout Michigan and into Ohio, Illinois, Indiana, Pennsylvania, West Virginia, Missouri, Wisconsin, Virginia and Ontario and Quebec, Canada. In these areas, EAB has killed more than 50 million ash trees.

In 2008, the four Great Plains states initiated a massive inventory project to identify and quantify tree resources in rural agroforestry, conservation plantings, and trees in urban areas, which have not been inventoried using a consistent method. To develop a methodology for accurately capturing the region's tree and forest resources, GPI contracted with the U.S. Forest Service (USFS) National Inventory, Monitoring and Assessment Center in Newtown Square, Pennsylvania.



Working with the center's survey experts, GPI developed a replicable, statistically valid methodology, including software and protocols, for surveying trees and forest resources that have not been captured by the USFS's traditional forestland inventories. Across the region, 1,200 1/6-acre plots were selected for inventory. Each

state surveyed 100 rural and 200 urban plots. Information about tree species, diameter, height, condition and distance from buildings was recorded. For rural plots, the function of trees was also recorded. Statisticians at the National Inventory Monitoring and Assessment Center are analyzing data.

The clear, accurate picture of forest resources across the northern plains provided by this inventory will allow forestry and natural resource professionals to identify areas most at risk to invasive species and make informed management decisions. Understanding the region's forest resources will also allow federal, state and local government officials to develop public policies that effectively manage the impact of invasive species.

EDUCATION > OUTREACH

To promote awareness of EAB among natural resource professionals, the GPI assembled an EAB Awareness Packet that included an assortment of print and electronic materials developed by experts with USDA Animal and Plant Health Inspection Service (APHIS), USFS and Michigan State University. The packet also included an information sheet designed to raise awareness about not only the threat of EAB, but also about what is being done within the northern plains to prepare for this pest.



More than 1,500 packets were distributed to natural resource professionals and extension personnel across the four states. Forestry officials are also deeply involved in developing state-level readiness and response plans which will help state and federal agencies work closely with communities to minimize the impacts of EAB infestations.

MONITORING > DETECTION

An EAB Detection Kit was developed to provide information about adult and larval EAB and help with citizen monitoring. They include a small vial for returning suspected specimens in postage-paid envelopes for verification. More than 2,000 kits have been distributed across the region.



FUTURE ACTIONS

This year, states will expand on the work initiated in 2008 and explore marketing and utilization opportunities for the vast quantities of waste wood that will be eventually generated by the dead or dying ash trees. Outreach activities will maintain the project's focus on educating the public and natural resources professionals about the danger of transporting firewood. Because early identification of EAB is critical, educational efforts will also focus on identifying ash trees and both adult and larval stages of EAB. States will create a template for communities to use in developing their own preparedness plans to prepare for the arrival of invasives and mitigate their damage. ■

Conserve Working Forests > Longleaf Pine Ecosystem Recovery Corridor

Addressing forest fragmentation and restoring working lands in a diverse Southern ecosystem

One of the most biologically diverse ecosystems on the continent, longleaf pine forests once covered more than ninety million acres in North America. Today, these forests cover less than three percent of the original longleaf acreage – a mere remnant of their former majesty.

In 2005, the Auburn University School of Forestry & Wildlife Sciences, the Longleaf Alliance, Alabama A&M University, and the University of Georgia Cooperative Extension Service held a series of meetings on the longleaf predicament. Their discussions confirmed that despite improved restoration techniques and significant restoration efforts, there was a pressing need for a focused restoration initiative and a recovery plan for the longleaf ecosystem.

Supported by a \$327,000 Redesign grant, the Alabama Forestry Commission (AFC) and Georgia Forestry Commission (GFC) are leveraging the support of the above organizations and the Southeast Regional Partnership for Planning and Sustainability (SERPPAS) to collaborate in a multi-agency effort to restore the longleaf ecosystem. The Alabama-Georgia Longleaf Pine Ecosystem Corridor project has a number of key goals:

- **conserve** economically viable longleaf forests
- **reduce** the threat to this ecosystem due to forest fragmentation
- **protect** environmental quality
- **enhance** forest sustainability
- **provide** critical habitat for threatened and endangered wildlife species.

SERPPAS established the Longleaf Pine Ecosystem Recovery Corridor to maintain, recover, and restore the longleaf pine ecosystem across its historic range. This project will draw on the knowledge and experience of SERPPAS member organizations: five southern state environmental and natural resource agencies, U.S. Department of Defense, U.S. Environmental Protection Agency, National Oceanic and Atmospheric Administration, U.S. Fish and Wildlife Service (FWS), U.S. Forest Service, and the Natural Resources Conservation Service (NRCS).

FIGHTING > FRAGMENTATION

The AFC and GFC have partnered to provide training and technical assistance to private landowners, consulting foresters, private wildlife biologists, city planners, developers and government agency natural resource profes-

sionals. To date, three training sessions have been conducted and the planning and preparation for an additional six has been completed. In addition, both agencies have held training sessions for their forestry personnel on how to promote and assist private landowner participation in NRCS and FWS longleaf restoration cost-share programs.



SEED SHORTAGE

Along with fragmentation threats, this grant will also address the significant shortage of longleaf seed, which continues to be a challenge to restoration. The longleaf pine is an episodic seed producer, varying greatly from year to year and place to place. Unlike most southern pines, longleaf pine seeds are unusually sensitive to damage and present unique challenges for collection and storage. Orchard production has proved more reliable than collecting seed from the wild. The AFC has used grant funds to begin restoration and enhancement of their Longleaf Pine Seed Orchard located within the longleaf corridor at Geneva State Forest, Alabama's largest state forest. Considerable effort will be

Silvopasture has the potential to reduce forest fragmentation by demonstrating that habitat restoration is compatible with cattle production.



able effort will be required to bring the orchards back into full production to provide some of the estimated three million pound shortfall of seed needed to grow adequate seedlings. Grant funds have enabled the AFC to collect and process more than 6,000 bushels of cones in FY08. The GFC was awarded a separate grant to restore and enhance their long-leaf seed orchard.

FUTURE ACTIONS

Yet another aspect of this project seeks to establish longleaf silvopasture demonstrations to show that habitat restoration is compatible with cattle production. Silvopasture has the potential to reduce forest fragmentation by integrating trees, livestock, and forage into a single system on one site. Inherently sustainable systems, silvopastures increase biological diversity, protect water quality, reduce soil erosion, and improve the water-holding capacity of the soil. Both forestry agencies have partnered with their state land-grant universities (University of Georgia Extension Service and Auburn University Extension Service) state forestry agencies to locate and implement silvopasture demonstrations. ■



Enhance Public Benefits > Forest Infrastructure Tools for Urban Communities

Piloting the use of Green Infrastructure to reduce stormwater and sewage overflows in the Northeast

The Hudson River and the New York/New Jersey Harbor estuary supply critical spawning and nursery habitat for more than 200 species of fish and shellfish. Bordered by twelve million people, it harbors a rich variety of wildlife, including the bald eagle. Besides its environmental value, the system supports commercial fishing and shipping, recreation, and provides municipal drinking water.



Every year, 710 combined sewer overflows (CSOs) dump more than 27 billion gallons of raw sewage and polluted storm water into the Harbor and estuary system. This broad initiative aims to apply Green Infrastructure principles to reduce CSOs while fostering stewardship and community empowerment.

The project is a collaboration between two state Urban and Community Forestry programs (New York and New Jersey), two regional ecosystem-based estuary programs (Hudson River and New York/New Jersey Harbor), local municipalities in New York and New Jersey, research partners (Drexel and Columbia Universities), and a diverse coalition of non-profit organizations.

A single tree can reduce urban runoff to sewers by up to 13,170 gallons per year. On-site storm water retention is a cost-effective, natural storm water treatment system. Green infrastructure also reduces local carbon dioxide levels and helps shelter urban centers, reducing the need for air conditioning in the summer and heating in the winter.

Greening projects foster stewardship and promote community empowerment, especially crucial in minority and low-income urban communities, which often suffer disproportionately from chemical contamination, air and water pollution, noise, and lack of green space. These “environmental justice communities” are the sites for three pilot projects to test new ecosystem-based management tools.

FROM GREY > TO GREEN

The project is using the recently-developed Low Impact Development Rapid Assessment Model (LIDRA) to identify, prioritize, and install LID practices to reduce CSOs. LIDRA also estimates environmental benefits and cost-effectiveness of using green infrastructure to control storm water. Each of three pilot areas is at a different stage in planning for green infrastructure, allowing project managers to track and document a wide range of options for urban communities across the United States that are on notice from EPA to reduce their CSOs.

The project – with a total budget of \$738,600, including the

Forest Service grant and support from cooperators – has three phases:

1. Identify community partners; refine and test the LIDRA model to prioritize sewer sheds.
2. Design and install storm water street trees and green space in priority areas;
3. Conduct outreach and education across the region and distribute training tools to a national audience; monitor results with local communities.



GREEN > COMMUNITIES

Project one is administered by the Youth Ministries for Peace and Justice (YMPJ), which has worked in the Bronx for 14 years. YMPJ has already identified a specific sewer shed where 680 million gallons of untreated wastewater are released into the lower Bronx River each year. YMPJ has assembled a team of scientists, engineers and contractors, who are developing a reforestation plan.

Project two focuses on Newtown Creek in New York, one of the country’s most polluted waterways that receives 2.7 billion gallons of CSOs per year. The project begins with intensive watershed planning using the same techniques employed in the Bronx.

New Jersey will conduct the third pilot project by replicating CSO planning models within the Greater Newark Bay and Upper New York Bay areas. Partners include the award winning New Jersey Tree Foundation, along

with communities in the project area that already have Community Forestry Management Plans.

FUTURE ACTIONS

Project partners will convene annual workshops to share LIDRA model analysis, project progress, and community benefits such as job creation. They will also develop an interactive CD and website for urban planners, engineers, consultants, and local, state and federal government agency staff throughout the U.S. Tools will include an easy-to-use guide to LIDRA, monitoring and cost data, lessons learned, outreach and training tools, designs and specifications, photos, CSO education module, and references. Project tools will be transferred to regional and state agencies for broad national implementation. ■



A single tree can reduce urban runoff to sewers by up to 13,170 gallons per year.



Synopsis of FY2008 Projects

Alabama	p. 10	Nebraska	p. 20
Alaska	p. 10	Nevada	p. 21
Arizona	p. 10	New Hampshire	p. 21
Arkansas	p. 11	New Jersey/New York	p. 21
California	p. 11	New Mexico	p. 21
Colorado	p. 11	North Carolina	p. 21
Connecticut	p. 12	Ohio	p. 23
Delaware	p. 12	Oklahoma	p. 23
District of Columbia	p. 12	Oregon	p. 24
Florida	p. 12	Pacific Islands	p. 30
Georgia	p. 14	Pennsylvania	p. 25
Idaho	p. 15	Puerto Rico	p. 31
Illinois	p. 16	Rhode Island	p. 25
Indiana	p. 16	South Carolina	p. 25
Iowa	p. 16	South Dakota	p. 25
Kansas	p. 17	Tennessee	p. 26
Kentucky	p. 17	Texas	p. 26
Maryland	p. 18	Utah	p. 27
Massachusetts	p. 18	Vermont	p. 27
Michigan	p. 18	Virginia	p. 28
Minnesota	p. 19	Washington	p. 29
Mississippi	p. 19	West Virginia	p. 29
Missouri	p. 19	Wisconsin	p. 29
Montana	p. 20	Wyoming	p. 30

The states not listed implemented State & Private projects in 2008 with funds other than those from the Redesign competitive grant process.

ALABAMA



Reaching Alabama's Underserved Forestland Owners

This project reaches across federal, state and local levels to identify methods to improve outreach efforts to Alabama's underserved landowner population. The Alabama Forestry Commission (AFC) has several areas of focus within this grant: 1) to build upon the current list of underserved landowners and place that information into a well-organized, detailed, web-based database; 2) to lessen the financial burden of prescribed and site-preparation burning; 3) to promote the importance of healthy forests; 4) to better reach the state's underserved population by creating a database containing current resources, contact information and available forest landowner services; and 5) to create curriculums and provide training to underserved landowners and foresters. The Alabama Forestry Commission received \$72k in federal funds to implement this grant in FY08.



Alabama Wildland-Urban Interface Project

The Alabama Forestry Commission is leading a multi-state grant to develop and offer training in urban planning techniques, fire hazard assessments and mitigation practices in the Wildland-Urban Interface (WUI). In cooperation with the State Forestry agencies of Florida, Georgia, Mississippi and Tennessee, the Commission will provide technical assistance to homeowners in high-risk communities. The focus of this assistance will be to conduct wildfire risk assessments and develop mitigation action plans. Partners include Firewise Community/USA, the Alabama Urban Forestry Association, Alabama Emergency Management Agency, developers, property owners associations, home builders associations, volunteer fire departments and fire associations. The Alabama Forestry Commission received \$266k in federal funds to implement this grant in FY08.



South Atlantic Cogongrass Detection, Education, Prevention and Control

Cogongrass is an invasive, non-native grass that has become a major problem for landowners, land managers, foresters, and governmental agencies across the South Atlantic. It affects pine productivity and survival, wildlife habitat, recreation, native plants, fire behavior, and more. Alabama, Florida, Georgia, and South Carolina have created a multi-state partnership to address issues related to cogongrass infestations and are working to coordinate strategies for detection and mapping, direct control and education and outreach. Partnering efforts have created groups of interested parties from all aspects of environmental management both within state boundaries and across state lines focused on invasive plant issues. As a result, more than 100 groups are now working on task forces known as Cooperative Weed Management Areas to combat cogongrass. Alabama received and has matched \$146k in federal funds to implement this grant in FY08.

ALASKA



Anchorage Inventory & Management Plan: Maximizing Forest Benefits

This project develops and implements the Municipality of Anchorage's first natural resource inventory and management plan covering 1,955 square miles in a transitional zone between the circumpolar boreal forest and coastal temperate rainforest. The area is made up of national forest, state park, coastal wildlife refuge and military land. It is inhabited by 260,000 people—nearly half the state's population. Environmental threats to these lands include wildfire, invasive species, unregulated recreation and loss of open space. This project is the highest priority for the state's Community Forestry Program because of its potential impacts on the majority of Alaskans and its ability to serve as a model. \$112k was granted and is matched with \$112k from the Municipality of Anchorage and the Alaska Division of Forestry.

ARIZONA



Sky Island Landscape Projects

This grant provides funding for the planning and implementing of fuels reduction projects identified as top priorities in Community Wildfire Protection Plans for four communities. Efforts are focused on protecting the landscape, restoring fire-adapted ecosystems, enhancing community fire protection capabilities, and reducing risks to communities. \$260k was granted and is matched with \$260k from Arizona Division of Forestry and community Fire Districts.

Arizona Forest Health Assistance Program

This grant provides, in part, funding for the Arizona Forest Health Assistance Program. These funds are also paired with \$1,000,000 appropriated by the Arizona Legislature to enhance and protect forests. \$272k was granted and is matched with \$272k from private landowners, counties, cities, fire departments, tribes and the Arizona Division of Forestry.

ARKANSAS

Conserving Arkansas Forests through Partnerships and Planning

The Arkansas Forestry Commission is collaborating with a diverse group of partners and professionals to conserve, protect and enhance Arkansas forests. This is being conducted through the development and implementation of comprehensive forest management plans for private landowners and the development and implementation of management plans and ordinances to protect urban forests. Activities will result in measurable outcomes that focus on a reduction of the acres of fractured forests, improved markets for some types of wood products, improvement in forest health and improvement in water quality and quantity. \$414k was granted and will be matched by the Arkansas Forestry Commission to implement this grant in FY08.



CALIFORNIA

Community Conservation Wildfire Protection Plan Implementation

This project's focus is on the implementation of Community Conservation and Wildfire Protection Plans for communities within critical watersheds – those providing significant water resources to major metropolitan communities such as the San Francisco Bay Area and Los Angeles. Funds will be used to continue fuels reduction and/or forest rehabilitation. \$300k was granted and is matched with \$500k from the Sierra Coordinated Resource Management Council (15 counties) and private landowners.

Emerald Necklace Partnership

The Emerald Necklace area is a 17-mile loop of parks & greenways connecting 16 cities and unincorporated areas along Río Hondo and San Gabriel Rivers in the San Gabriel Valley. Project priorities are to: 1) create new forested areas, 2) implement multi-benefit greening practices, 3) increase awareness of urban forest benefits, 4) provide technical assistance to communities, 5) launch programs for tree care, tree inventory and mulch production, 6) facilitate social and economic incentives for maintaining and protecting landscaped areas, and 7) support long term forest management. \$248k was granted and is matched with \$248k from Emerald Necklace Cities, CalFire, the Sierra Coordinated Resource Management Council, and Amigos de los Ríos.



COLORADO

Front Range Fuels Treatment Partnership (FRFTP) – Community Conservation Wildfire Protection Plans (CCWPPs)

The focus of this project is on high-priority landscapes and watersheds in Colorado's Front Range where more than 750,000 people live within the wildland-urban interface, and more than 3 million others depend on critical Front Range watersheds for domestic water. Outcomes of this project include: completion of five CWPPs, treatment of 1,000 acres, and information and education assistance to landowners and local communities. \$300k was granted and is matched with \$300k from landowners, counties, fires districts, the Colorado State Forest Service and the FRFTP Roundtable.

Lodgepole Pine Forest Health

This project addresses the most severe mountain pine beetle outbreak on record occurring in Colorado's high country. The current infestation has created wildfire hazards and poses significant threat to watersheds, wildlife habitat, recreation, tourism, and community infrastructure. Outcomes of the project include: 1) 4,500 acres treated to protect communities, watersheds, and critical resources, 2) enhanced communication and information, 3) promotion of wood utilization, and 4) assistance to Fire Departments. \$300k was granted and is matched with \$414k from landowners, Colorado State Forest Service, counties, and the state land board.

Front Range Community Watershed Initiative

The focus of this project is the management and protection of Colorado's Front Range watersheds which are at risk from wildfire, insect epidemics, invasive species, and other hazards. Recent large scale, high-severity wildfires have caused tremendous erosion that deposited huge amounts of sediment in reservoirs and degraded water quality. Water providers have spent millions on post-fire mitigation costs. Outcomes include: establishment and development of a collaborative watershed management strategy, development of a minimum of two watershed-level protection plans, and implementation of watershed protection projects on 995 acres. \$300k was granted and is being matched with \$300k from the Colorado State Forest Service, the Pinchot Institute, American Water Works Association & Research Foundation, municipal water providers and the FRFTP.



CONNECTICUT



Building and Implementing a Watershed Conservation Plan at the Local Level

This project will generate new, detailed, state-of-the-art spatial data for land-use planning and resource management decision-making in the Natchaug River Watershed in northeastern Connecticut. The data will be used to identify forest parcels most critical to protecting water quality, creating landscape connectivity, and conserving biodiversity. An outreach campaign will be used to promote working forests and to protect the forest from wildfire and sprawl-induced fragmentation. The need for water sources for rural firefighting will also be addressed. The \$125k grant is being matched by partners including the Green Valley Institute, Connecticut Department of Environmental Protection Division of Forestry, the Windham Regional Council of Governments, The Nature Conservancy, several local governments, and others.



Monitoring Protocol for Forest Ecosystem Health: Connecticut Highlands

Basic, science-based ecosystem health indicators could be an affordable early warning system or way to document ecosystem recovery. This \$175k grant will develop and test protocols and deploy them statewide. The project is thought to be the first to link data to existing GIS layers on forest cover, fragmentation, land use, invasive species and pathogens, wildlife distribution, and other geographic analyses. Partners include Audubon Connecticut, The Nature Conservancy, the Connecticut Agricultural Experiment Station, Connecticut Department of Environmental Protection, Connecticut Division of Wildlife, Metropolitan District Commission, University of Connecticut, Yale University, and others.

Multi-state projects: See **New Hampshire** – Building a Sustainable and Competitive Logging Workforce; **Massachusetts** – Urban Tree Canopy Tool Development and Assessment, Goal Setting, and Implementation

DELAWARE



Urban Heat Island Mitigation

The entire State of Delaware fails to meet the U.S. Environmental Protection Agency's 8-hour ozone standard. New Castle County fails to meet the standard for fine particles, showing the highest concentrations in the City of Wilmington. Trees and vegetation effectively reduce urban heat islands and particulates, besides offering a host of other benefits. This \$104k project of the Delaware Forest Service in the Christina River Watershed is quantifying air quality benefits from strategically-located trees and pervious surfaces, planting trees to lower urban temperatures, implementing best management practices that include storm water management, educating the public, and developing guidelines for future projects. Partners include the Delaware Center for Horticulture, Delaware Natural Resources Air Quality Management Section, and school volunteers.



Statewide Urban and Community Forestry Planning Initiative

Delaware loses 3,000 acres of forest to development each year, creating Wildland Urban Interface (WUI) areas in the process. With state-of-the-art spatial analysis products, partners will assess the urban forest canopy and WUI threats and use an overlay model to target priority areas. Sustainable management plans will include factors such as tree canopy, amount of impervious surface, population, and WUI fire risk. Tree planting and hazardous fuels mitigation will follow the planning phase. \$172k was granted and is being matched by partners that include the Delaware Department of Natural Resources and Environmental Control and the Division of Air and Waste Management, and the Delaware Center for Horticulture.

DISTRICT OF COLUMBIA

Multi-state project: See **Massachusetts** – Urban Tree Canopy Tool Development and Assessment, Goal Setting, and Implementation

FLORIDA



Certified Burn Manager Refresher Training

The State of Florida requires Certified Burn Managers to take eight hours of refresher training every five years to maintain certification. Currently, no options focus on reeducating prescribed burners. The Florida Division of Forestry received \$59k in federal funds to implement a distance-learning course that focuses on reeducating Certified Burn Managers on all aspects of prescribed fire. \$59k will be matched with support from partners that include The Nature Conservancy, U.S. Fish & Wildlife Service, Florida Fish and Wildlife Conservation Commission, National Park Service, Hillsborough Community College, Florida Park Service, and Volusia County Fire Services.

FLORIDA (CONTINUED)

Effectiveness of Silviculture Best Management Practices for Forest Fertilization in Operational Silviculture and Pine Straw Production

Pine straw production is an expanding industry in much of the South. This \$150k project will examine the environmental consequences associated with increased fertilization of forested land for pine straw production. The primary goal is to evaluate the effectiveness of current forest fertilization Best Management Practices (BMPs) in reducing non-point source pollution in both surface and groundwater. In order to accomplish this, the Florida Division of Forestry will assess the amount, type and rates of fertilizer applied in pine straw production.



Habitat Quality Enhancement Program

Florida's aggressive acquisition programs have resulted in acres that have been added to the state forest system that are in the need of restoration. Upland ecosystems in Florida depend on frequent fire to sustain ecosystem function, ecological diversity and wildlife resources. Unfortunately, changes in land use and incompatible fire and timber management programs have greatly altered plant communities resulting in population declines of northern bobwhites and numerous other fire dependent wildlife species. This \$55k grant supports the introduction of these practices to enhance the habitat quality of three state forests. Additionally, this grant enables a partnership between the Florida Division of Forestry and the National Wild Turkey Federation (NWTf). Under sponsorship from this grant, NWTf will examine ways in which prescribed burning or mechanical treatments can enhance the forest resource and simultaneously improve habitat for the wild turkey.



Healthy Forests Education: Why and How?

In most natural resource education programs designed for K-12 students, the biotic and abiotic components of unhealthy forests and their management are underrepresented topics. This \$41k grant focuses on developing "Keeping Forests Healthy" education kits that will provide groups such as 4-H, Future Farmers of America, Project Learning Tree, Vo-Ag, and nature center leaders and teachers with much needed aids in order to meet critical educational needs. The Florida Division of Forestry will partner with the University of Florida to design the curriculum, which is expected to include student workbooks, videos/CD-ROMs, flashcards, an interactive Web site, and educational specimen kits.



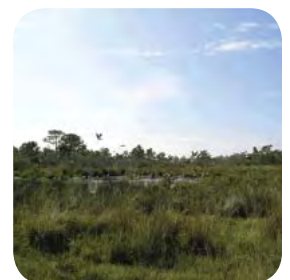
One Message, Many Voices: A Regional Prescribed Fire Messaging Campaign

A growing sentiment against prescribed burning exists throughout the South. This \$479k grant supports the development of a regional message and various templates that could be used by any state to educate the public about the benefits of prescribed burning. The Florida Division of Forestry, the Georgia Forestry Commission, and the South Carolina Forestry Commission secured this multi-state grant and are working in cooperation with Tall Timber Research Station and prescribed fire councils from each state to develop the campaign. In addition to state agency contributions, additional matching support will come from value-added media time.



Florida Wildfire Prevention Education Program Online Course Development

The Florida Wildfire Prevention Education CD-ROM was developed several years ago as a way for students to improve academically while learning about good (prescribed) and bad (wild) fires. This \$35k grant (with \$35k match) will convert the program to an online course that can be used by teachers, students, and the general public. Once developed, this web-based program can be adapted for little cost to be used in other states. The Florida Division of Forestry is partnering with the U.S. Forest Service, Tall Timbers Research Station, The Nature Conservancy, University of Florida, and Forestry Arson Alert Association.



Southeast Florida Forest Canopy and Ecological Community Revitalization

This project focuses on restoring the urban tree canopy in Southeast Florida, restoring indigenous forested communities of that region, and quantifying the environmental, economic, and social benefits derived from these efforts. Partners include non-profit environmental organizations, community revitalization groups, municipal government entities, and entities from the arboricultural and nursery industries. This \$50k project will enhance existing efforts that partners have initiated, particularly those with the "green" industry who recognize the value these projects have on their longevity. In addition to state agency contributions, local governments and non-governmental entities will contribute matching funds and/or leverage existing contracts to support this project.

Stewardship Ecosystem Services Project

This \$48k grant employs the use of the ecosystem service model of the U.S. Forest Service and field data collected by Florida Division of Forestry's Stewardship program to quantify the ecosystem services provided by Florida's private forest land. These benefits include clean air and water, wildlife diversity and habitat, and recreational as well as educational opportunities. Deliverables include research paper, educational materials for public distribution and educational workshops.

FLORIDA (CONTINUED)



Web-based Open Burn Authorizations

This grant supports the development of web-based software to authorize open burns within the state of Florida. This software will provide a simple and efficient way of requesting an authorization. The subsequent denial or approval of the authorization would be instantly available to staff at the Division of Forestry. Additionally, this software will interface with the current Fire Management Information System which tracks all Division of Forestry wildfires and open burning authorizations. This system is being evaluated by other states for their possible use. The Florida Division of Forestry will match \$300k received in federal funds to implement this grant in FY08.

Multi-state projects: See **Alabama** – Wildland-Urban Interface Project; South Atlantic Cogongrass project

GEORGIA



Creating a Legacy: Marketing Strategy

Through a partnership with the Georgia Urban Forest Council (GUFC), Georgia Forestry Commission will launch “The Grove” on Georgia’s Arbor Day in February. Family members and friends are encouraged to commemorate special life moments such as a birth, graduation, marriage or holiday by planting a tree and register it in The Grove. Similar to Facebook, users can post photographs and comments. The registered tree becomes a family heirloom passed down to generations leading family members to visit the tree in future years. The Forestry Commission received \$103k in federal funds to implement this grant. In addition to state agency contributions, donations to the GUFC’s Tree Legacy Grant Program can be made through the Web site and will serve to leverage the funding.



Central Georgia Strategic Outreach Initiative

The forests of central Georgia are rated as high risk for loss to urban sprawl and southern pine beetle, and watersheds there contain significant mileage of impaired streams. Yet the potential for a landscape approach to forest conservation is high due to presence of the Oconee National Forest, Piedmont National Wildlife Refuge, high-profile landowners interested in using their lands as demonstration forests, and the recent divestiture of large acreage of industry land to new landowners looking for guidance. With this \$111k project, Georgia Forestry Commission is working with many partners, including the U.S. Forest Service and sportsman’s organizations, to generate a common landscape-level vision among landowners. Encouraging private groups to organize landowners is a key part of this effort.



Community Wildfire Protection Plans

Over a three-year period, the Georgia Forestry Commission will develop 100 Community Wildfire Protection Plans beginning with counties with high wildfire occurrence. This \$171k grant employs the use of a regional geo-spatial database, the Southern Wildfire Risk Assessment. Partners include GA Emergency Management Agency, Georgia State Firefighter’s Association, Georgia Association of Fire Chiefs, National Park Service, U.S. Fish and Wildlife Service, U.S. Department of Defense, Georgia Association of County Commissioners and local county government. In addition to state agency contributions, funding from the Federal Emergency Management Agency for fire prevention and mitigation will be leveraged.



Etowah Watershed Assessment

The Georgia Forestry Commission and the University of Georgia will match \$187k in federal funds to develop a state assessment methodology to identify conditions and issues to be addressed in statewide forest resource assessment and response plans. The focus will be on using GIS to integrate multi-scale data sets to assess the current forest condition for all types of land ownership. Results will help to prioritize future projects and set goals for conservation, protection and enhancement of forest resources in Georgia. The methodology will be tested on the Etowah River Watershed in order to determine statewide applicability. Partners include federal and state agencies, The Nature Conservancy, local governments and landowners.

Greater Okefenokee Association of Landowners (GOAL) Hazard Mitigation

The recent 564,000-acre Georgia Bay Complex wildfire in Southeast Georgia and North Florida offers unique opportunities to promote wildfire mitigation efforts over a three-county area in GA. Included in this area is a very well-organized and nationally known landowner association, Greater Okefenokee Association of Landowners (GOAL). This \$68k grant will create a partnership with GOAL to create a defensible buffer adjacent to the Swamp Edge Break to reduce conditions that contribute to wildfires. In addition to state agency contributions, funds are being leveraged by contributions from partners like the University of Georgia, the Georgia Land Conservation Council, The Nature Conservancy, the Georgia Conservancy, and The Conservation Fund, among others.

GEORGIA (CONTINUED)

Integrated Green Infrastructure Management Systems

Recent wildfires of historic proportion in Georgia's 11-county coastal region illustrate the need to reevaluate methods of resource management, land-use planning and wildfire protection to provide for present and future needs. An assessment of natural areas and rural-urban interface communities, conducted by the Georgia Department of Natural Resources, will enable foresters, community leaders and land-use planners to develop a Green Infrastructure system for this diverse ecosystem. The Georgia Forestry Commission received \$34k in federal funding to implement this grant in FY08. It is also supported by partnerships with the Association County Commissioners of Georgia and the Georgia Conservancy and is partially funded by a \$700k grant from the Robert W. Woodruff Foundation.



Longleaf–Wiregrass Seed Orchard

Only three percent of longleaf forests remain and the restoration of the longleaf pine ecosystem is a high priority for land managers in the Southeast. Currently, there is no available source for longleaf pine-wiregrass seed. This \$49k grant enabled the establishment of a 15-acre seed collection area in Central Georgia. The Georgia Forestry Commission is beginning to actively manage the site to restore its natural ecological function. The site will soon provide much needed wire grass seed and already serves as a demonstration site for training and awareness.



Minority Landowner Forestry Education and Training

Loss of land ownership among minority landowners continues at an alarming rate – much faster than among the majority population. Research shows that when the underserved, minority, and limited resource farmers/landowners are provided the necessary technical support, they are able to maintain and in many instances increase their land's productivity and profitability. This \$91k grant is designed to increase awareness and provide technical assistance to minority and underserved landowners throughout Georgia and the South. The Georgia Forestry Commission will collaborate with partners like African-American Family Farmer, the Federation of Southern Cooperatives, Women in Rural Development and other agricultural and natural resource organizations within the state to provide training and technical assistance to limited resource, minority, and underserved farmers/landowners on forest protection and management.



Montane Longleaf Seed Collection Area

Although montane longleaf pine forests were never extensive and limited to a small area of the upper piedmont, these areas in the South have seen the rise of several major metropolitan areas. This \$48k grant focuses on seed collection of montane longleaf as a method of ensuring the long-term survival and diversity of the species. The Georgia Forestry Commission will use funds secured through this grant to collect seed from across the natural range and grow seedlings for deployment in 2009. A 5-acre tract has already been selected and prepared for this year's growing season.

Southern Region Outreach and Marketing Partnership

The intent of this \$75k grant is to leverage the outreach capacity of certain conservation partners to deliver good land management practices and principals to private forest landowners throughout the Southern region. The Georgia Forestry Commission will sponsor TV shows where specific management practices are highlighted that enhance the awareness of good land stewardship. Partnerships have already been established with the Quality Deer Management Association to produce the "Quality Whitetail" show and with the National Wild Turkey Federation to produce a show called "Get in the Game." Additionally, the Commission will work to develop magazine articles targeting private landowners and sponsor national conventions where a large segment of land owners in the South may gain exposure to the services offered by the Southern Group of State Foresters.

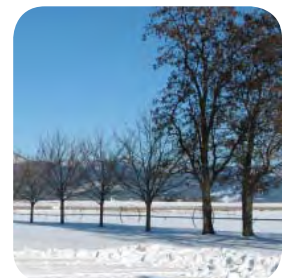


Multi-state projects: See **Alabama** – Wildland-Urban Interface Project; South Atlantic Cogongrass project ; Alabama-Georgia Longleaf Pine Corridor; **Florida** – One Message, Many Voices

IDAHO

Geographical Information Systems Forest Analysis – Rathdrum Prairie Aquifer

This cooperative effort between the Idaho Department of Lands and local governments will develop and implement a GIS analysis of tree canopy to storm water mitigation and water conservation and quality. The analysis will identify vegetative and impervious land cover in order to determine existing—and model future—canopy benefits, provide information for planning and help guide forestry and development activities to maximize public benefits from green infrastructure. \$248k was granted and is matched with \$248k from the Department of Lands, Panhandle Lakes Resource Conservation and Development, Idaho Department of Environmental Quality, Panhandle Health Districts, City and County Departments.



ILLINOIS



Exotic and Invasive Pest Analysis and Issue Characterization of Municipalities

Greater Chicago is under intense pressure from exotic pests. Although some pest management strategies are in place, they address street trees only. The \$370k project is working with four Chicago-area cities to develop and implement a science-based, practical method to assess and manage threats from exotic pests. Deliverables include community-level GIS data, a report on community issues, an Exotic and Invasive species Manual/Action Plan, and local action plans. Partners include the Illinois Department of Natural Resources, Davies Resource Group, Illinois Department of Agriculture, Animal Plant Health Inspection Service, Illinois Arborist Association, the University of Illinois Extension, and citizen-based groups.



Engaging Landowners in Oak-Hickory Forest Restoration

Oak-hickory forests once dominated the Illinois River Bluffs. These working ecosystems filtered and infiltrated stormwater, protected erodible soils, and harbored a diverse array of flora and fauna. This \$300k grant seeks to restore functionality by thinning invasive vegetation and allowing the slopes to repopulate with native oak-hickory species. The project will also protect eroding slopes that continue to harm existing, degraded forests that currently populate the bluffs and is expected to reduce sedimentation by about 20,000 tons per year. Partners will match \$300k and include the Tri-County Regional Planning Commission, Landowners, Native American Fellowship, Daysprings Church (demonstration site), local government, and the Natural Resources and Your Development Task Force.

INDIANA



Working Forest Carbon Offset Project

The project is establishing a process for private landowners to participate in the Carbon Offset Trading Market as they sustainably manage their forestland. The scope includes a baseline inventory, certification, contract with an aggregator, training for landowners and foresters, and a means to trade the additional carbon their forests sequester as a result of their management activities. New stewardship plans will be written for an estimated 19,000 acres initially. Partners will leverage a matching \$243k to total \$485k, and include the Michigan, Indiana and Minnesota Departments of Natural Resources, the Delta Institute, Extension Service, and Natural Resources Conservation Service.



Sample Urban Statewide Inventory (SUSI) Tools

The \$101k project targets 16 watersheds that do not meet clean water or other natural resource goals, or need protection to sustain current water quality. Data from a statewide urban forest health inventory and analysis will be used to create user guides, which will detail how to plant trees strategically to improve air and water quality, sequester carbon, and enhance the urban environment. Information will also allow users to promote conservation of existing parcels based on their environmental and economic values. Partners include the Davey Resource Group, 20 municipalities, and the Indiana Urban Forestry Council.

IOWA



Focused Landscape-level Management Across Public & Private Sector Properties

This \$300k grant establishes focused, integrated landscape level management across 21,214 acres of public and privately owned forests in the Soap Creek Watershed. It includes a targeted private forest landowner outreach campaign for the 17,113 acres that surround public land and will develop a web-based GIS tool to demonstrate forest stewardship connectivity across ownership boundaries. This project marks the first time that multiple public agencies have developed cross-boundary management plans for public land. Partners will contribute \$335k and include the Iowa Department of Natural Resources' Forestry, Parks and Wildlife Bureaus, Iowa DNR GIS Section, Iowa Department of Agriculture and Land Stewardship, Division of Soil Conservation, Appanoose County Soil & Water Conservation District, and Davis County Soil & Water Conservation District.



Emerald Ash Borer Monitoring, Evaluation, and Outreach

Emerald ash borer has killed an estimated 25 million ash trees in three nearby states. The stakes are high: 20-60% of Iowa's street trees and 5% of its forests are ash. A quarantine is in place, but relatively ineffective against accidental distribution. Partners are visually surveying campgrounds, nurseries, sawmills, and recent commercial and residential developments built pre-quarantine, as well as monitoring 400 trees at campgrounds along major highways. Public outreach includes workshops, publications, billboards, radio and TV advertising, and direct mailings to out-of-state hunters and campers. This project is supported by a \$200k grant which will be matched by partners including the Iowa Forestry Bureau, Iowa State University, Iowa Department of Agriculture State Entomologist's Office, USDA Animal and Plant Health Inspection Service, campground managers, and city planners.

KANSAS

Re-Greening Greensburg

On May 4, 2007, a tornado destroyed 95% of Greensburg, including its treasured trees. Virtually all trees that were left standing required removal and replacement, including an estimated 2,000 public trees. This project will replant and restore, on both public and private property, a minimum of 25% of the tree canopy as well as providing care and maintenance during the following three growing seasons. To promote long-term care, education and training sessions will be conducted. \$248k was granted and is matched with \$248k from the Kansas Forest Service, Kansas State Research and Extension, Sunflower Resource Conservation and Development, National Arbor Day Foundation, Kansas Department of Transportation, Kansas Tree City USA Communities, Kansas Arborist Association, Kansas Nursery and Landscape Association and Westar Energy.



Conserving, Renovating & Establishing Field Windbreaks

This project will establish a methodology that can be used to 1) identify the size and condition of field windbreaks, 2) identify priority areas where windbreak establishment is most effective, and 3) assign ecosystem service values to the windbreaks. By developing baseline data, successful adoption of field windbreak renovation and establishment can be measured and the methodology applied across the Great Plains. The project will be implemented in seven counties. \$116,567 was granted and is matched with \$116,567 from the Coronado Crossing and Sunflower RC & D and Kansas State University.



KENTUCKY

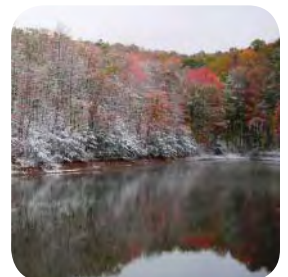
Changing Roles: Wildland-Urban Interface Professional Development Program

This \$10k project is providing a series of regional training sessions targeting Kentucky Division of Forestry personnel and other key partners such as: Natural Resources Conservation Service district conservationists, biologists with the Kentucky Department for Fish and Wildlife Resources, and University of Kentucky Cooperative Extension agents. The training will be facilitated by the Kentucky Division of Forestry Stewardship and Education Section, along with the University of Kentucky Cooperative Extension Service. A keynote speaker will validate the importance of the workshop to natural resource professionals participating and highlight the challenges of natural resource management in a society of changing values and fragmented forests.



Crosswalk and Development of GIS Mapping Applications

The "M-5" tool enables field foresters with a minimum working knowledge of the GIS software program ArcView to create a standardized landowner map. This \$15k grant enables the Kentucky Division of Forestry to crosswalk the "M-5" tool to the most recent version of mapping software. The Division of Forestry is working with the University of Kentucky to rewrite the computer code and test the tool within the new software to ensure its usability.



Property Tax Assessment Guideline for Woodland Owners

Property tax has been one of the top concerns for forest landowners throughout the South. Fair and proper taxation improves environmental stewardship and investment return from the land. This \$4k grant supports the development of guidelines for forest landowners that provides them with awareness and training on property tax assessments for woodlands. Project partners include the University of Kentucky Department Of Forestry and the University of Kentucky Research Foundation. In addition to state agency contributions, the Kentucky Department of Revenue is contributing in-kind support to this project.



East Kentucky Local Forestry Association Initiative

To increase capacity to meet the growing threats to forests in eastern Kentucky, the Division of Forestry is enlisting local forestry associations in conducting outreach, spreading conservation education, and accomplishing forest management. Staff from the Division of Forestry have provided advice, encouragement, and logistical support to local forestry leaders resulting in creation of eight fledgling local forestry associations. The \$15k in grant funds are being made available to these groups through sub-grants administered by the Kentucky Division of Conservation; these sub-grants will support local organization activities, such as hosting workshops and field days.

Economic Impact of Fire on Forest Product Values in the Appalachian Region

This \$4k grant supports the development of a pilot procedure for estimating wildfire timber devaluation in upland hardwood stands. The overall objective is to provide estimates of timber devaluation to eastern Kentucky and eastern Tennessee forests resulting from the occurrence of wildfire regimes common to the Appalachian region. It may also be possible to use this information to provide loss estimates for individual wildfire events. Partners include University of Kentucky, Tennessee Division of Forestry, University of Tennessee and U.S. Forest Service Southern Research Station.



MARYLAND



Baltimore City Urban Tree Canopy Assessment And Implementation

The City of Baltimore recently set a goal to attain 40% urban tree canopy by 2036. The Parks & People Foundation, agencies, community organizations, and residents will complete four watershed-wide GIS-based field surveys and greening plans to focus on maximizing the environmental benefits of trees and other vegetation. Plans include removing or mitigating 12 acres of impervious surfaces, installing 124 stormwater and erosion control projects, creating new green spaces, and planting 2,000 trees at 22 schoolyards, nine public housing properties, and four neighborhoods. Partners include the Parks & People Foundation, Baltimore County Department of Environmental Protection and Resource Management, Baltimore City Department of Housing and Community Development, the Baltimore City Public School System, and numerous local groups. \$200k were granted and partner support totals \$1.04M.



Maryland Environmental Service- Wood Energy Specialist

The state's Public Service Commission has issued a sober prediction: "Unless steps are taken now, Maryland faces a critical shortage of electricity that could force mandatory usage restrictions, such as rolling blackouts, by 2011 or 2012." A partial answer: 800,000 tons of urban wood debris generated each year. The Maryland Forest Service and the Maryland Environmental Service are working on this \$200k project to move wood energy from concept to installation within three years. A contracted wood energy technical consultant will work directly with candidate installations to augment Maryland Environmental Service engineering and economic expertise. Partners include the Maryland Energy Administration, the University of Maryland, the Community Woodlands Alliance, and numerous environmental, civic, and tree industry organizations.

MASSACHUSETTS



Urban Tree Canopy Tool Development and Assessment, Goal Setting, and Implementation

Rhode Island, Connecticut, and Massachusetts are among the top four states with the highest rates of urban expansion. Urban forests in these states, as well as in Vermont and the District of Columbia, are becoming the predominant forests, bringing critical environmental, social, and economic benefits to communities. This \$823k project is using remote sensing and analysis to explore and document opportunities to increase canopy cover in high priority urban centers. They are building local capacity to analyze and act upon the data by developing local networks and coalitions. Replicable procedures and strategies will be shared with communities nationwide. Partners include the State Foresters' offices in each state, several major cities, the Urban Ecology Institute, the University of Vermont Spatial Analysis Lab, New England Patriots Charitable Foundation, the Metropolitan Washington Council of Governments, and local community groups.

Multi-state project: See [New Hampshire](#) – Building a Sustainable and Competitive Logging Workforce

MICHIGAN



Coalition to Improve Management of Nonindustrial Private Forests

Michigan's challenges include a high proportion of older landowners, leading to accelerated rates of ownership turnover and forest fragmentation, too few landowners managing their forests, fewer government resources for landowner assistance, and economic pressure on forests. This \$202k grant is supporting the work of a new coalition of government, forest industry, educational, and non-profit organizations that is coordinating services to increase the number of landowners actively managing their land. A key message explains that forest management helps meet personal goals while conserving the working landscapes that enhance the state's economic, social, and environmental health. Partners include the Michigan Department of Natural Resources, Michigan State Extension, The Nature Conservancy, Michigan Farm Bureau, Michigan United Conservation Clubs, and the Michigan Timberman Association.



Michigan Communities at Risk/Community Wildfire Protection Plan Development Support

The project is assisting the state's highest-risk communities with their Community Wildfire Protection Plans with outreach to homeowners, landowners, and businesses. Partners are helping communities develop mitigation measures that are specific to their particular situation. The selected communities for this \$313k project were identified as high priority in the recently-completed University of Michigan Extension assessment of Communities at Risk. Partners include the Michigan Department of Natural Resources, the University of Michigan Extension, the U.S. Fish and Wildlife Service, the U.S. Park Service, U.S. Bureau of Indian Affairs, the Michigan State Firefighters Association, and the Michigan Association of Fire Chiefs.

MICHIGAN (CONTINUED)

Family Forests for the Future: Enhancing Intergenerational Transfer of Family Forests

Many Michigan landowners have difficulty planning for—or even discussing—what will happen to their land after they have passed away. This \$25k grant is providing landowners and their families with the tools to talk about their values and wishes, to meet environmental and economic goals for their land, and to learn about specific methods they can use to keep their land intact for future generations. Topics include long term forest management scenarios, legal options, and transfer of property. The goal is to reduce forest fragmentation and conversion across the landscape. Partners are matching an additional \$25k and include the Michigan Department of Natural Resources and Michigan State University Extension.



High-Resolution Remote-Sensed Imagery for Rapid Detection of Pests and Diseases in Urban and Rural Landscapes

Early detection of forest health issues is critical to developing effective management and rapid response strategies. The \$304k project (\$77k granted) is using hyper-spectral imagery to detect emerald ash borer, beech bark disease, oak wilt, and hemlock woolly adelgid and assess the condition of ash, beech, oak, and hemlock in urban and rural forests. Suspect areas will be located via imagery and followed up with on-site assessments to determine species, condition, and causes of tree decline or mortality. Information will improve the accuracy of National Risk Map models and measure the extent and percentage of urban tree cover in Traverse City. Partners include the Michigan and Wisconsin Departments of Natural Resources, Michigan Department of Agriculture, and the U.S. Forest Service Eastern Threats Center at the Southern Research Station, with support from the Menominee Tribe, Wisconsin Nature Conservancy, and others.



Emerald Ash Borer Risk Based Detection Survey

First discovered in Michigan in 2002, the exotic emerald ash borer kills trees of all sizes. The \$159k project (\$74k Forest Service grant) is conducting a risk based detection survey by using trap trees to supplement ongoing baited trap surveys. Increasing the scope of the survey will better identify areas where the exotic insect is established, providing the information needed to target areas where treatment will be most beneficial. Early detection is the best tool for controlling and preventing the spread of this destructive insect. Partners include the Wisconsin Department of Natural Resources, Michigan Department of Natural Resources, and Michigan Technological University.



MINNESOTA

Interagency Education Plan and Invasive Species Web Portal

Public awareness is critical to early detection and management of invasive species. Several independent efforts have been launched in the state, creating duplication of effort and potential public confusion. The \$100k project will leverage an additional \$105k to develop an interagency 10-year education plan aimed at motivating public action regarding invasive species. It will also create a one-stop Web site to integrate the information and Web sites of all participating organizations. Partners include the MN Division of Ecological Services, University of Minnesota, Minnesota Forest Protection Task Force, Minnesota Hospitality, Minnesota Shade Tree Advisory Committee, Minnesota Department of Agriculture, Animal Plant Health Inspection Service, Minnesota Invasive Species Advisory Council, Minnesota Department of Transportation, Minnesota Consumer and Trade Protection, Minnesota Forest Resource Council.



MISSISSIPPI

Multi-state project: See **Alabama** – Wildland-Urban Interface Project

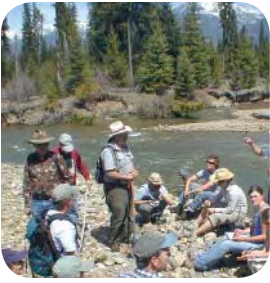
MISSOURI

Tools for Working with Small Acreage Landowners

A melding of the state's Community Forestry and Stewardship/Private Lands Programs, the project is identifying and motivating landowners who hold between three and 60 acres in thirteen rapidly-growing Missouri counties. Programs are targeting assistance to the state's "Conservation Opportunity Areas" where applicable. Landowners will be invited to join the Missouri Forestkeepers Network, an existing program whose mission is to develop a network of informed citizens working to conserve, sustain and enhance the state's urban and rural resources through volunteerism, monitoring, advocacy, and management. \$70k has been granted and will be matched by partners which include Missouri ReLeaf (day-to-day management), Department of Natural Resources, and Missouri Forestkeepers Network.



MONTANA



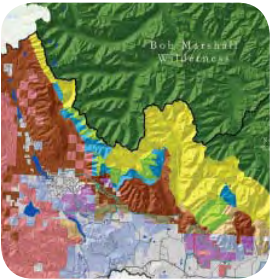
Butte Watershed Restoration Project

The Butte Watershed covers 425,830 acres and is at tremendous risk of large and catastrophic wildfires. Private and public forest lands within the watershed and surrounding the city have been severely impacted by extensive mountain pine beetle outbreaks and associated build-up of fuels. Outcomes of this project include: workshops addressing forest stewardship, insects and diseases, cost-share assistance to treat over 600 high priority acres in priority water source uptake areas, an urban forestry resource analysis and implementation plan, and support of new biomass systems. Progress thus far includes a prioritization schedule for cooperative work in various areas of the watershed developed by a local coordinating group of stakeholders. All Stewardship and Forest Health cost-share dollars have been set up contractually with Headwaters and are being deployed. \$300k was granted and is matched with \$300k from the Montana Department of Natural Resources and Conservation, Beaverhead-Deer Lodge National Forest, the Bureau of Land Management, Butte-Silver Bow and Jefferson Counties, Montana Fish, Wildlife, and Parks, Montana State University Extension Forestry, Headwaters Resource Conservation & Development and private landowners.



Swan Valley Planning, Outreach & Conservation

This project will develop 25 new stewardship plans, treat a minimum of 400 acres, and assess urban storm water run-off challenges in the Swan Valley watershed (466,061 acres). This watershed has been identified as having high stewardship potential as well as high risk for catastrophic wildfires. The Swan Valley is part of the Northern Continental Divide Ecosystem which provides habitat and vital connectivity for several nationally significant, threatened and endangered species. \$300k was granted and is being matched with \$375k from the Confederated Salish and Kootenai Tribes, Montana Department of Natural Resources and Conservation, Montana Department of Environmental Quality, Plum Creek Timber Company, Missoula and Lake Counties, Montana Fish, Wildlife and Parks, The Trust for Public Land, U.S. Fish and Wildlife Service, Friends of the Wild Swan, Swan Ecosystem Center and Montana State University Extension Forestry.



Blackfoot Watershed Forest Health Project

This grant supports fuels reduction, weed mitigation, and forest landscape and riparian restoration on 1,700 forest acres in the Blackfoot Watershed (1.5 million acres). 88,000 acres of working forest previously owned by industry have been conserved in this area. This project is also leverages state support for a biomass co-generation plant in Seeley Lake. \$300k was granted and is being matched with \$300k from the Blackfoot Cooperative, the Blackfoot Challenge, Clearwater Resource Council, Montana Department of Natural Resources and Conservation and private landowners.

NEBRASKA



ReTree Nebraska: People and Technology for Healthier Urban Forests

ReTree Nebraska targets critical forest resources of the metro area around Lincoln and Omaha. Extreme weather events and disease outbreaks have reduced tree populations by over 20%. The Emerald Ash Borer threatens to kill an additional 30% of the existing tree population. When healthy, these forests can provide environmental benefits estimated at \$1.7 billion. Outcomes will include: 1) a strategic business that guides resources and efforts, 2) enhanced local capacity, 3) sound policies and ordinances, 4) increased financial investment, 5) sustained community action, and 6) integration of urban forestry criteria into the Environmental Protection Agency (EPA) State Implementation Plan and other regulatory criteria. \$300k was granted and is being matched with \$300k from Natural Resources Conservation Service, Nebraska Arborists Association, Nebraska Nursery and Landscape Association, Nebraska Arboretum, Area Natural Resource Districts, Center for Advanced Land Management Institute, Nebraska Department of Environmental Quality, EPA, Nebraska Department of Roads, National Arbor Day Foundation, and the cities of Lincoln and Omaha.



Assessing, Protecting and Enhancing Forest Health in the Niobrara Valley

The area contains 150,000 acres of overstocked private forest land. This multi-institution project will: 1) identify strategic and critical areas needing fuels reduction, 2) craft multiple forest stewardship plans, 3) implement fuels reduction across 2,600 strategic acres, 4) foster market development for woody biomass, 5) implement Firewise programs, and 6) assess forest health and fragmentation trends. \$300k was granted and is being matched by the Natural Resources Conservation Service, NE Game and Parks Commission, Natural Resources Conservation Service, Nebraska Arborist Association, Nebraska Nursery and Landscape Association, Emergency Management agencies, U.S. Fish & Wildlife Service, National Park Service, Nebraska State Volunteer Firefighters Association and The Nature Conservancy.

NEVADA

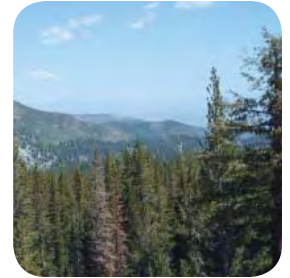
Spring Mountain Range, Mt. Charleston

By strategically reducing fuels in the urban interface this project will reduce the risk of wildland fire, reduce the spread of bark beetle and create economic opportunities through biomass utilization. There will be education and outreach opportunities during Arbor Day celebrations, teacher workshops, FireFest, the Nevada Fire Education Awareness Week, and "Living in the Forest" forest health and tree care workshops. \$300k was granted and is being matched with \$300k from the Nevada Division of Forestry, Nevada Fire Safe Council, Nevada Power, Clark County Volunteer Fire Department, University of Nevada Las Vegas, Nevada American Society of Landscape Architects, Clark County Library District, University of Nevada Cooperative Extension, Western Chapter International Society of Arboriculture, Southern Nevada Arborist Group, and the Clark County Schools.



Mt. Rose Corridor Community Fuels, Fire and Forest Health

This Project is a cooperative, multi-agency effort to enhance community fire protection, public safety, conservation education and to address current forest health issues, while developing strong, lasting and mutually beneficial relationships among the participants. Specific projects include: removal of dead trees and thinning live trees at the Mt. Rose Ski Area, Nevada Department of Transportation right-of-way clearance for fuels reduction, fuel breaks within and around communities and the county park, Firewise landscaping and education. The anticipated outcomes are: improvement of community fire safety, reduction of forest fuels in treated areas, increased community utilization of Firewise, and improved forest health. \$300k was granted and is being matched with \$300k from Nevada Division of Forestry, Washoe County Parks & Open Space, Sierra Fire Protection District, Nevada Fire Safe Council, Nevada Department of Transportation, Mt. Rose Ski Area, University of Nevada Cooperative Extension, Galena Forest Estates & St. James Village Homeowners Association, and the Nevada Department of Wildlife.



NEW HAMPSHIRE

Building a Sustainable and Competitive Logging Workforce

Connecticut Logger certification programs benefit the logging profession by improving skills and worker safety. They also promote responsible harvesting, helping to safeguard working forests and the benefits they provide to society. Landowners and consumers benefit from knowing their products were harvested sustainably. This project is auditing at least 14 southern New England logging companies, certifying those that meet Northeast Master Logger Certification Program standards. It is also providing Game of Logging and Hardwood Log Bucking training. \$50k was granted and is being matched by partners which include the Trust to Conserve Northeast Forestlands, Massachusetts Department of Conservation and Recreation, the Northeastern Loggers' Association, and Hull Forest Products.



NEW JERSEY/NEW YORK

Multi-state project: See [page 7](#) – Forest Infrastructure Tools for Urban Communities

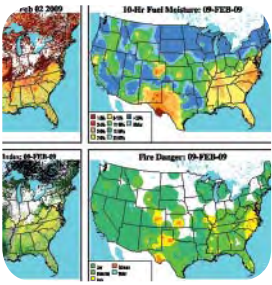
NEW MEXICO

Candy Kitchen Forest and Watershed Health

The forested areas and communities within this project area are listed 'at-risk' for catastrophic wildfire. The project will expand and connect fuels treatments. Outcomes will include: increased protection from wildfire, increased resiliency to disturbance by insects and disease, improvements in rangeland health with associated wildlife benefits, improved watershed health by utilizing biomass to reduce erosion as well as economic benefits to local residents from forest products. The treatments are strategically located to reduce the threat of a high intensity fire entering the several subdivisions and tribal residences that comprise the community. \$206K was granted and is being matched with \$206k in funds from New Mexico State Land Office, Bureau of Land Management Rio Puerco Field Office, Lava Soil and Water Conservation District, Natural Resources Conservation Service Grants Field Office, the Ramah Chapter of the Navajo Nation, and the Candy Kitchen Fire Department.



NORTH CAROLINA



Digital Aerial Sketchmapping Technology

The U.S. Forest Service Forest Health Technology Enterprise Team has developed the capability to sketchmap forest pest conditions using computer and Global Position System technology and digital base maps. Locations of pest outbreaks are sketched into a computer sketchmapper to be later retrieved, displayed, and archived in a Geographic Information System (GIS) format. This technology has proven successful in mapping forest health concerns and could potentially be used to effectively and efficiently detect and document activities/occurrences via aerial observations in the areas of forest management, water quality, fire control, emergency management, and law enforcement. North Carolina is in the process of procuring three Digital Aerial Sketchmapping units; once acquired, extensive training will be offered to potential users of the systems. The North Carolina Division of Forest Resources received \$20k in federal funding to implement this grant in FY08.

Enhancement of NC Division of Forest Resources Fire Environment Program

This \$105k project builds on the existing Interagency Wildland-Urban Interface (WUI) - Fire Danger Remote Automated Weather System (RAWS) network. The state received original funding for this network through National Fire Plan grants. Grant objectives include adding new WUI-Prescribed Fire RAWS at the higher elevations in the state's mountain region, updating data collection and allowing for the continued training of personnel. Training will focus on the care and maintenance of the WUI Fire Danger Station network, certifying burn bosses on use of the weather station network, the National Fire Danger Rating System to assess burning conditions and using GIS technology in the new Division of Forest Resources Smoke Management Program. Partners include other state and federal natural resource agencies in North Carolina.



Forest Health Information, Education and Outreach

This \$16k grant funds the production of a series of brochures, posters and web pages to address: hemlock woolly adelgid, gypsy moth, bark beetles, oak decline, storm damage to timber, storm damage to urban trees, defoliators, urban pests, and emerging issues (non-native invasive pests to enter the state such as emerald ash borer, Sirex woodwasp, laurel wilt, etc.). A portion of each pest brochure/poster/web page will address urban issues/controls for that pest. A series of four additional products will also be developed with an emphasis on educating North Carolina landowners and homeowners about smart management of their forests and multiple uses.



Landowner Survey

The vast majority of North Carolina's 700,000 forest landowners are in need of forest management advice and services. The North Carolina Division of Forest Resources, Division of Soil & Water, North Carolina Wildlife Resources Commission, North Carolina State University Forestry Extension, as well as private consulting foresters and others natural resources professionals have been providing these forestry services in a "traditional" manner, but have not been able to reach all landowners. Perhaps there is a need for a service not currently offered? Or there may be a better way to provide a service that needs to be explored? This \$1k grant provides the Division of Forest Resources with an opportunity to determine types of advice and services landowners need from natural resource professionals through a mail-in survey. The results will enable the Division of Forest Resources and its partners to develop new, more effective programs and services to accommodate forest landowners.



Landowner's Link to Virtual Forest Management

To greatly expand their reach to the more than 700,000 forest landowners in the state, the Division of Forest Resources is developing a "Link to Virtual Forest Management" Web site through a \$13k Redesign grant. This site will allow computer-savvy landowners, including absentee landowners living in other states, to begin developing their own forest management plan by identifying their objectives, forest types, and forest management options. The site also allows them to establish a relationship by e-mail and phone with a real forester or other resource professional who can carry the planning process further. This effort is being pursued in partnership with North Carolina Wildlife Resources Commission, North Carolina Cooperative Extension Service, and the Association of Consulting Foresters among others.



Firewise-Urban Intermix Community Grants

The purpose of this project is to make a directed effort to prevent wildfires and improve urban forest health by combining Firewise and urban forest management concepts. This \$250k grant will assist geographic areas that have been identified by the Southern Wildfire Risk Assessment, Community Wildfire Protection Plans, or urban forestry council as high-risk or high-growth. Partners include National Forests in North Carolina, North Carolina State University, North Carolina League of Municipalities, private consulting foresters, North Carolina Center for Geographic Information and Analysis, North Carolina Cooperative Extension Service, North Carolina Urban Forestry Council and the North Carolina Firewise Council.

NORTH CAROLINA (CONTINUED)

North Carolina's Longleaf Pine Initiative and Action Plan

More than 95 percent of the longleaf pine forests in North America have been converted to other uses. This \$46k grant aims to sustain and promote the restoration of longleaf pine in the state by establishing new stands, conserving existing stands and promoting total resource management. The Division of Forest Resources has already developed two new landowner-focused publications, completed a web-based longleaf pine resource list with internet links, and compiled a catalogue of presentations on silviculture for internal staff self-study and reference. The Division of Forest Resources became a full partner and gained a seat on the steering committee on the North Carolina Sandhills Conservation Partnership, which coordinates the development and implementation of conservation strategies for native biota, longleaf pine and other ecosystems in the sandhills of North Carolina.



Student Intern Assessment Student Conservation Association Crews

This grant employs the use of Student Conservation Association (SCA) crews to facilitate the completion of Community Wildfire Protection Plans, urban forest assessments, forest pest and disease assessments and other valuable forest management data. These crews will support field personnel and community members. Additionally, this \$250k grant will assist geographic areas that have been identified by the Southern Wildfire Risk Assessment as high-risk. To accomplish these goals, the Division of Forest Resources will partner with North Carolina Department of Environmental & Natural Resources, North Carolina Department of Insurance, North Carolina Fire Marshals Office, and the North Carolina Division of Emergency Management.



Woodland Owner Short Course, Regional Expansion

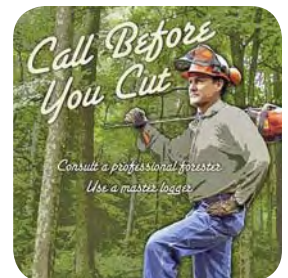
The intent of the Woodland Owner Short Course (WOSC) is to bring innovative forest management concepts and approaches to small landowners in order to help them realize the full potential of their land and utility of their natural resources. This three-year, \$25k project will expand the current curriculum of the WOSC to the North Carolina piedmont and coastal regions, and is also applicable in Virginia, South Carolina, Georgia, and Tennessee. All of these states are experiencing forest fragmentation and land development pressures. The current WOSC curriculum will be modified to suit region-specific forestry issues and management techniques. The Division of Forest Resources will develop partnerships to expand WOSC during the last year of the grant to the neighboring states. Ultimately, the hope is to distribute WOSC curriculum nationwide.



OHIO

Enhanced Call Before You Cut: Central Hardwoods Region

Ohio's Call before You Cut Program, which provides one-stop information to landowners, has more than doubled the number of referrals to consulting foresters since late 2006. This project builds on Ohio's success by adopting coordinated messages on key issues across the 70 million-acre Central Hardwoods region. Several regional products are planned: radio ads, billboards, posters, event displays, a multi-media campaign kit, and a regional survey. The project also establishes regional Best Management Practices standards and monitoring processes for evaluating landowner decisions and actions after they've received technical assistance. \$259k has been granted and will be matched by partners including the State Foresters of Indiana, Illinois, Iowa, Missouri, and West Virginia, Ohio State University, The Nature Conservancy, and numerous others.



Integrated Approach to Mitigate and Manage the Effects of Invasive Plants

Nationally, invasive plants cause about \$120 billion in damage to the environment, forestry, agriculture, industry, recreation, and human health annually. Because Ohio is in a climatic and physiographic transition zone, the state faces a higher-than-normal onslaught of invasives. Partners are integrating programs to more effectively deal with the problem in five watersheds in 22 counties. Areas of cooperation include management recommendations, strategic use of EQIP funds, demonstration areas, and treatment/control measures. \$500k has been granted and will be matched by partners including the Ohio Division of Forestry, the U.S. Forest Service Northeastern Area, Wayne National Forest, the Natural Resources Conservation Service, the Ohio Invasive Plants Council, and the Northern Research Station.





Canadian River Riparian Forest Restoration Project

This two-year, \$72k project is designed to enhance and restore the riparian forest and habitat along a portion of a 70-mile section of the Canadian River and its tributaries located in western Oklahoma. The project area adjoins a section of the river that is located in Texas, previously targeted by the U.S. Fish and Wildlife Service (FWS) and National Wild Turkey Federation (NWTf) for riparian area restoration as a part of the Southern Great Plains Riparian Initiative. Oklahoma Forestry Services has established partnerships with the Oklahoma Department of Wildlife Conservation, Natural Resources Conservation Service, Oklahoma Conservation Commission, The Nature Conservancy, FWS and the NWTf to enhance the ecosystem services provided by the project area.



City of Edmond, OK: Green Infrastructure Initiative

Central Oklahoma is undergoing significant development pressures within the Cross Timbers ecosystem, an area which is valuable in terms of the ecosystem services that it provides. In order to reduce forest fragmentation, loss of habitats, increased wildfire risk and stormwater retention issues, Oklahoma Forestry Services is partnering with the City of Edmond and the Edmond Land Conservancy to develop a Green Infrastructure plan for the community. The plan will identify high priority forest landscapes and provide goals and methodologies to focus limited resources to maintain or enhance the forestlands. As a result of the work that has been done to date, this \$19k project is serving as a model for other communities within Oklahoma.

Fuel Models

This project will develop custom fuel models to better predict fire behavior for various forest cover types occurring in Oklahoma. For each custom fuel model, Oklahoma Forestry Services will produce, print and distribute pocket cards for each custom fuel model. This \$49k project will affect communities statewide as the custom fuel models are used to make safer and more efficient fire suppression decisions. These products will be shared with adjacent states with similar ecological regions, ultimately resulting in improvements across the region. Partners include the Bureau of Indian Affairs, rural fire coordinators, various municipal and rural fire departments, community governments, Native American communities within Oklahoma, the Texas Forest Service and Arkansas Forestry Commission.



Forest Health Monitoring: Digital Aerial Sketchmapping

The Food and Forestry Division of the Oklahoma Department of Agriculture currently conducts aerial forest health monitoring using aerial photographs from 1996. This grant will significantly improve the program's efficiency and effectiveness by integrating digital aerial sketchmapping into the state's forest health monitoring efforts and will support training on the proper utilization and implementation of digital technologies. Oklahoma Forestry Services received \$24k in federal funding which was matched by the Food and Forestry Division.

Firewise Coordinator

This grant will enable Oklahoma Forestry Services to contract the services of a coordinator to promote Firewise principles across the state. Efforts will be focused in communities identified as having a high risk of wildfire. The contractor will assist communities in developing Community Wildfire Protection Plans and Firewise Plans. A primary goal of this grant is to provide communities with the knowledge and capacity to become recognized as a Firewise USA community. Partners include the Bureau of Indian Affairs, rural fire coordinators, various municipal and rural fire departments, local governments, and various Native American communities. Oklahoma Forestry Services received \$37k in federal funding to implement this grant in FY08.



Community Wildfire Protection Plans – Firewise Plan Grants

This grant will provide financial assistance for the development of Community Wildfire Protection Plans and Firewise Plans. Applicants will compete for a \$7,500 grant to be awarded to a community. Partners include the Bureau of Indian Affairs, rural fire coordinators, various municipal and rural fire departments, local governments, and various Native American communities. Oklahoma Forestry Services received \$48k in federal funding to implement this grant in FY08.

Southern Wildfire Risk Assessment (SWRA) Update

This grant will allow Oklahoma Forestry Services to update the "Fire Occurrence Activity" (FOA) layer of the Southern Wildfire Risk Assessment (SWRA). By updating this layer, Oklahoma will be positioned to produce an accurate picture of wildfire risk and hazard within the state. Additionally, this update will distribute fire occurrence evenly over each fire district in Central and Western Oklahoma. Funding will also support the updates of other SWRA layers for all of Oklahoma as required. Partners include the Bureau of Indian Affairs, rural fire coordinators, various municipal and rural fire departments, local governments, and various Native American communities. Oklahoma Forestry Services received \$48k in federal funding to implement this grant in FY08.



OKLAHOMA (CONTINUED)

Landowner Workshop: The Emerging Carbon Market

Payments to forest landowners for the carbon sequestration that existing forests provide has become an increasingly real possibility as an emerging market. The Oklahoma legislature recognized this in 2001 by enacting carbon legislation to support these types of payments. However, Oklahoma's forest landowners have little understanding of the carbon market. Landowner workshops will provide the citizens with non-biased information they need to make informed decisions about their forested lands. Partners that will assist in the development and dissemination of this information include Oklahoma State University Extension, Oklahoma Conservation Commission, the Secretaries of Oklahoma Agriculture and the Environment, Oklahoma Forestry Association, Cross Timbers Forestry, and the state's major utilities. Oklahoma Forestry Services received \$12k in federal funding to implement this grant in FY08.



OREGON

Healthy Watersheds to Benefit Salmon and Priority Species

This project proposes to conserve, protect, and enhance the health and function of riparian forests throughout Oregon. Projects include large wood placements, fish passage barrier removal, invasive species treatments, and improved riparian forest management. These projects will help restore *salmonid* species listed in recovery plans, benefit wildlife needs identified in the Oregon Conservation Strategy, and increase benefits forests provide. \$300k was granted and is being matched with \$600k from the Oregon Department of Forestry, OR Department of Fish and Wildlife, OR Watershed Enhancement Board, and private landowners.



Multi-state project: See **Washington** – Best Management Practices to Reduce Forest Fragmentation

PENNSYLVANIA

Treewitalize Communities: Best Practices for County and Local Governments

Of 239 local governments in five southeast Pennsylvania counties, just 17% have a strong urban forestry program. This project targets 24 communities that have below-average tree cover. Cooperators are training municipal officials and citizens and providing on-site and remote technical assistance. The project is also promoting cross-boundary cooperation. The \$94k Redesign grant is leveraging an additional \$150k from partners which are led by the Pennsylvania Department of Conservation and Natural Resources Bureau of Forestry and include the Pennsylvania Horticultural Society, Penn State School of Forest Resources, Delaware Valley Regional Planning Commission, Pennsylvania Environmental Council, and Morris Arboretum.



RHODE ISLAND

Multi-state project: See **New Hampshire** – Building a Sustainable and Competitive Logging Workforce; **Massachusetts** – Urban Tree Canopy Tool Development and Assessment, Goal Setting, and Implementation

SOUTH CAROLINA

Sandhill Research and Education Center Communication Plan

The areas adjacent to the Sandhill Research and Education Center (SREC) in South Carolina have seen tremendous infrastructure development and urban growth. This \$21k grant will fund a communication plan to raise awareness of these communities with regard to wildfire risk. The plan will address how homeowners can mitigate this threat, the ways in which forest management practices can reduce the risk and the potential use of collaborative efforts in resolving issues in a rapidly developing urban area. Partners include the Sandhill Fire Department, SREC/Clemson University; local homeowner association presidents, Richland County Soil & Water Conservation District, and the South Carolina Resource and Conservation District Council.



South Carolina Green Infrastructure Training Academy

South Carolina land use planners and local government leaders are not well-versed in the value of land conservation and ecological functions of working forests and other green spaces. Through this \$25k Redesign grant, the Green Infrastructure Training Academy will facilitate a one-time geographically-based workshop that will introduce a balanced, strategic, and comprehensive approach to land conservation. Participants will learn about the need to implement sensible, sustainable land use plans by bringing diverse groups together to find common ground and to demonstrate the powerful and profitable link between working landscapes and people.

Multi-state project: See **Florida** – One Message, Many Voices

SOUTH DAKOTA



Black Hills Forest Health and Restoration Project

The project focuses on the Black Hills of western South Dakota, which has been identified as high forest stewardship potential. Cross jurisdictional management is stressed. The focus is on specific forest health actions and technical assistance private forest landowners to improve resistance to mountain pine beetle attack, reduce the risk of catastrophic fire, enhance wildlife habitat and aesthetics, and sequester carbon through faster growing residual trees. This will be accomplished through timber harvests, pre-commercial thinning of forest stands and other activities. \$300k was granted and is being matched with \$300k from South Dakota Department of Agriculture, South Dakota Department of Game, Fish & Parks, South Dakota Conservation Districts, South Dakota Communities, South Dakota Association of Conservation Districts and the Natural Resources Conservation Service.

Missouri River Conservation & Forestry

This project concentrates in tributaries of the Missouri River that have been identified as high priority areas for water quality improvement. Many landowners and communities are agreeable to implementing forestry best management practices using present day funding opportunities, but do not have access or the information necessary to participate. This project will focus on providing the technical assistance needed to educate, plan the practices and obtain proper documentation to become eligible for cost-share. \$300k was granted and is being matched with \$300k in funds from the South Dakota Department of Agriculture, South Dakota Conservation Districts, South Dakota Communities, and Natural Resources Conservation Service.

TENNESSEE



Prevention Wins-out Over Debris Fires in East Tennessee

This \$175k grant provides the framework for a high profile fire prevention message that provides the necessary means to achieve the beginnings of basic behavioral changes needed in the public's safe use of outdoor fire. The Tennessee Division of Forestry, along with other fire prevention cooperators, will develop and continue to execute fire prevention programs and distribute fire prevention materials and programs to homeowners, schools, communities and other government agencies. Partners include the National Park Service, Tennessee Resource Conservation and Development Councils, Tennessee Valley Authority, the Natural Resources Conservation Service, County Wildland Urban Interface Task Forces, Tennessee Firewise Communities, Tennessee Inter-Agency Fire Cooperative, Tennessee Wildlife Resources Agency, County Forest Landowners Associations, and the University of Tennessee.

Multi-state project: See **Alabama** – Wildland-Urban Interface Project

TEXAS



Services, Utilization and Marketing (SUM) Task Force

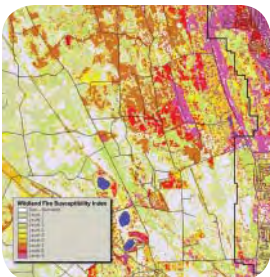
The Southern Group of State Foresters has established several committees to stimulate and guide multi-state efforts. One critical group is the SUM Task Force, charged with coordinating initiatives concerning changing markets for forest-related products and services. These changes include emergence of markets for carbon sequestration, other ecosystem services, and biofuels, and declines in traditional forest product markets. This \$150k grant provides funds for the Task Force to sponsor a regional Carbon Sequestration Workshop and develop options for a Southern carbon protocol. Other work includes preparing a publication that promotes regional forest-related economic development opportunities and developing white papers related to biofuels markets.

Changing Roles Professional Development Program and Southern Wildfire Risk Assessment

This grant \$100k will prepare natural resource professionals to address the challenges they face in the rapidly changing wildland-urban interface (WUI). Resource professionals will learn how to effectively manage for sustainability in the interface by meeting the needs of interface landowners and remaining relevant into the future. Southern Wildfire Risk Assessment training will provide increased capability for natural resource professionals to identify areas of wildland fire risk and begin mitigating that risk where possible. Partners include the Southern Group of State Foresters, Southern Center for WUI Research and Information, U.S. Fish and Wildlife Service, Natural Resources Conservation Service, National Park Service, Association of Consulting Foresters – TX Chapter, TX Cooperative Extension, TX Parks and Wildlife and Texas Master Naturalist.

Enterprise GIS – Strategic Business Plan and System Design

Geographic Information Systems (GIS) are becoming essential for efficiently and effectively delivering many forest resource programs. Pulling together diverse spatial and non-spatial data into one enterprise GIS results in standardization and non-redundancy of data across the organization. In addition to allowing a broad range



TEXAS (CONTINUED)

of users to access the data in maps and tables through Internet applications, it allows for efficient reporting of spatial accomplishments, which is becoming required in some U.S. Forest Service programs. Before such a complex system can be implemented by the Texas Forest Service, an assessment and plan are needed. This \$98k project will deliver a strategic business plan for an enterprise GIS and a design for the system.

Sustainability of Forest Resources in East Texas and the South

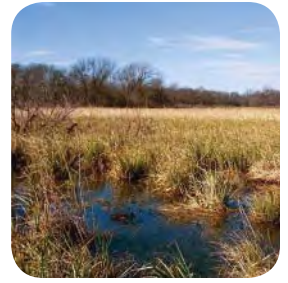
In the past, traditional forest-product markets have sustained East Texas forests by providing economic incentives for sustainable management. With traditional markets in decline, new markets are needed to compete with other incentives for development and forest conversion. This \$164k project encourages new markets for carbon offsets and biofuels, while working to reinvigorate traditional markets. Timber volume and biomass availability have been inventoried, and media developed to promote forest industry. The Texas Forest Service is acting as third-party verifier for carbon offset projects under Chicago Climate Exchange and developing managed-forest verification protocols. Outreach to educate landowners about these market opportunities is occurring through a Forest Expo and outreach strategy development by a local outreach leader.

Texas Emerging Communities Initiative: Managing High Velocity Change

Leaders of rapidly growing Texas communities are being challenged to devise reasonable, affordable, and effective ways in which to grow, develop, and protect their communities while also integrating the critically important contributions made by forest ecosystems and natural areas. This \$375k project aims to: 1) identify and empower these communities; 2) recognize and pro-actively manage their significant natural resource issues; and 3) prepare for rapid growth before it happens, not after. Current and potential partners include the American Planning Association, Texas City Management Association, Texas Municipal League, and various county, city, and municipal governments throughout the state.

Central Texas Woodlands Conservation Initiative

Although not the kind of forest traditionally the focus of forest management in the South, the oak woodlands of central Texas are highly valued for their contributions to scenic beauty, watershed protection, endangered species habitat, and real estate values. Because they are under threat from conversion and parcelization, wild-fire, oak wilt disease, and non-native invasive, the Texas Forest Service has launched a Woodlands Conservation Initiative to deliver integrated educational and management programs and establish regional advisory committees. Partners include the Natural Resources Conservation Service, Lyndon B. Johnson Wildflower Center, Texas Parks and Wildlife, The Nature Conservancy, the National Park Service, and Texas Cooperative Extension. Texas Forest Service received \$275k in federal funding to implement this grant in FY08.



UTAH

Jordan River Forest Watershed Initiative

This proposal is focused on forest and riparian vegetation stewardship within the Jordan River Watershed of north central Utah. The project will influence surface vegetation management by incorporating modern forestry principals and activities that sustain the functionality of native plant communities. \$300k was granted and is being matched with \$300k from Salt Lake County, Utah Partnership for Conservation Development, Taylorsville City, Murray City, Bonneville Coop Weed Management, Utah Community Forest Council, Tree Utah, Utah State University Extension, Department of Transportation, Jordan River Watershed Council, Wasatch Front Regional Council, Jordan River Water Conservancy District, Department of Environmental Quality, Division of Wildlife Resources, Salt Lake City, Envision Utah, Sundance Preserve, Brigham Young University, North Fork Special Service District, and private landowners.



VERMONT

Marketing Stewardship to New Forest Land Buyers

Marketing and social behavior studies show that landowners are most open to information about managing their land when they are contacted directly soon after they acquire property. New landowners are more likely to know little about their land and to have no experience with forest management. Early contact could be a very effective way to target the landowners most likely to manage, reaching them before they make irreversible choices. The \$43k project will use land transaction records to find new landowners, and will provide information about broader forest issues such as climate change in addition to forest management messages. Partners include the Vermont Department of Forests, Parks & Recreation, VT Tax Department, Vermont RealEstateSales.net, Department of Fish and Wildlife, Vermont COVERTS, Inc. (landowner association), ACORN (information for small woodlot owners via University of Massachusetts).



Multi-state project: See **Massachusetts** – Urban Tree Canopy Tool Development and Assessment, Goal Setting, and Implementation



Southern Group of State Foresters Communication Activities

This \$65k grant will help research, write and produce a multi-faceted strategic communications plan that will guide the informational and educational programs of the Southern Group of State Foresters. Media outreach events will be conducted in the form of feature stories and aired on networks such as CNN and The Weather Channel. Partners include the Southern Group of State Foresters, all southern state natural resource agencies and federal natural resource agencies.



Developing Strategic Elements for Northern Virginia Implementation of Washington DC-area State Air Quality Implementation Plan

This project will improve the documentation and reporting of voluntary tree planting and maintenance programs in the Northern Virginia/Washington DC area. More specifically, the Virginia Department of Forestry will develop educational and outreach materials that will link these efforts to the State Air Quality Implementation Plan. Partners include the Northern Virginia Urban Forestry Roundtable, Fairfax County, DC Metro Council of Governments and the Center for Chesapeake Communities. The Department of Forestry received \$52k in federal funding to implement this grant in FY08. In addition to state agency contributions, funds are being leveraged by a cash match from local jurisdictions through the Center for Chesapeake Communities.



Education to Promote Land Conservation

This \$26k project is focused on developing educational strategies and materials to promote land conservation activities in Virginia. Materials developed will also address forest health and forestry-related water quality issues as well as including a green infrastructure component. Partners include the Virginia Department of Conservation and Recreation, Hampton Roads Planning District Commission, and Virginia Parks and Recreation Association.



Moving Ecosystem Service Markets Forward for Forest Landowners

This \$75k grant provides funding to focus on quantifying carbon sequestration, water quality and potential biodiversity benefits from non-industrial private forests. Measurable estimates of the flow of the ecosystem services enable development of new markets for forests and contribute to informed decision-making in land use and planning. A variety of partners are involved in this project including Virginia Tech, The Nature Conservancy and the Chesapeake Bay Foundation. In addition to state agency contributions, funds are being leveraged by in-kind contributions from the Virginia Department of Environmental Quality and Virginia Tech.

Green Infrastructure Planning Partnership & Conserving New River's Forest Landscape

This \$37k grant is focused on developing an overall strategy for the planning, implementation and sustainable management of a regional green infrastructure for communities in the New River Valley. The Department of Forestry will accomplish this work in close partnership with the New River Valley Planning District Commission, a leader in green infrastructure planning. The project focuses on partnership building, the development of green and gray infrastructure layers for the region, the development of a regional plan and identifying and education landowners in the valley about how to conserve their working forestlands.



Using Pre-commercial Thinning and Longleaf Pine Restoration as Tools to Mitigate the Impacts of the Southern Pine Beetle

This \$125k project will provide landowners with financial assistance for pre-commercial thinning of overstocked pine stands and for the establishment of longleaf pine plantations on appropriate sites. Efforts to restore native Virginia longleaf pine will involve harvesting seed from local sources and establishing reliable nursery production of native stock for sale and distribution. Efforts will continue on Virginia state forests to replant and maintain productive loblolly pine forests, particularly in areas previously impacted by the southern pine beetle. Deliverables will include an unspecified but significant number of acres thinned or planted to longleaf and other pine species. Reestablishment of longleaf pine over a significant acreage will represent a noticeable change to the forest landscape as these stands grow and mature owing to the unique appearance of this species.

WASHINGTON

Best Management Practices to Reduce Forest Fragmentation

This is a multi-state project between the Oregon Department of Forestry and the Washington Department of Natural Resources to address forest conservation and fragmentation issues in developing lands of the Seattle and Portland metropolitan areas. This initiative has two main facets, including: a) helping builders and developers understand Best Management Practices for selecting, conserving, retaining or removing trees on construction sites, and b) helping small landowners who want to maintain working forests do so in the urban/wildland interface. This can serve as a model for development that retains forest values. Materials developed are easily adaptable and replicable to other interface areas. \$100k was granted and is being matched with \$100k from Oregon Department of Forestry, Washington Department of Natural Resources, Oregon State University Extension, and Washington State University Extension.



WEST VIRGINIA

Cool Community Challenge

This project promotes the use of strategically placed trees to mitigate heating and cooling costs in core areas of the state's economically challenged communities. Previous experience reveals multiple benefits: lower heating and cooling costs in buildings, citizens actively engaged in improving their living environment, local tree boards and citizen groups with more expertise and capacity to manage urban natural resources, and a boost in economic vitality. The project is providing technical assistance, trees, planting materials, and labor to communities. \$75k was granted and is being matched by partners that include the West Virginia Division of Forestry, West Virginia Division of Energy, West Virginia Urban Forestry Council, and West Virginia municipalities.



WISCONSIN

Forest and Watershed Management In Wisconsin's Lake Superior Basin

After runoff forced a "boil water" warning for thousands of residents, the Wisconsin Department of Natural Resources (WDNR) used Northeastern Area-wide protocols to assess the potential of forests to control run-off. WDNR is using satellite images to locate and target critical lands, providing information to forest management professionals, and assisting landowners in critical areas. This \$300k project is also quantifying ecological services provided by Basin forests and analyzing landowner preferences for conservation options. Partners include the Wisconsin and Minnesota Departments of Natural Resources, the Nemadji River Basin Project, the Natural Resources Conservation Service, and the U.S. Environmental Protection Agency.



Wisconsin Forest Inventory and Reporting System

Wisconsin lacks geospatial data on private lands enrolled in state tax programs and/or the stewardship program. WisFIRS, a statewide forest land management IT system, will allow public, private, and consulting foresters to target priority sites and manage them in a landscape context. This \$700k WisFIRS project will enable counties, Wisconsin Department of Natural Resources staff, and private consulting foresters to span agency boundaries, save time, reduce errors, improve communication, and enhance forest management. It also automates stewardship plan tracking and reporting. Local governments can use the information for comprehensive land use planning. Partners include county foresters, cooperating foresters and certified plan writers.



Emerald Ash Borer Risk Based Detection Survey

First discovered in Michigan in 2002, the emerald ash borer kills trees of all sizes. The project is conducting a risk based detection survey by using trap trees to supplement on-going baited trap surveys. Increasing the scope of the survey will better identify areas where the exotic insect is established, providing the information needed to target areas where treatment will be most beneficial. Early detection is the best tool for controlling and preventing the spread of this destructive insect. \$79k was granted and will be matched by partners that include the Wisconsin Department of Natural Resources, Michigan Department of Natural Resources, and Michigan Technological University.



Multi-state project: See **Michigan** – High-Resolution Remote-Sensed Imagery for Rapid Detection of Pests & Diseases in Urban and Rural Landscapes

WYOMING



Clear Creek Vegetation Enhancement

The primary objectives of the project are to: 1) mitigate wildland fire risk, 2) mitigate risks from hazard trees, 3) conserve and restore native trees, 4) enhance the outdoor learning experience, and 5) serve as a model for similar future projects. \$75k was granted and is being matched with \$75k in funds from the Wyoming State Forestry Division, City of Buffalo, Johnson County Fire District, Johnson County Weed and Pest, Natural Resources Conservation Service, Lake DeSmet Conservation District, Clear Creek Trail Committee, Clear Creek Middle School, Wyoming Department of Agriculture, Wyoming Department of Corrections, Wyoming Game and Fish, Buffalo Tree Board, and Johnson County Tourism Association.

Wyoming Information and Education

This \$57k grant will provide science-based information to land users and managers on land fragmentation and parcelization. An additional \$67k in funds is being contributed by the Wyoming Association of Conservation Districts, Project Learning Tree, University of Wyoming Extension, Natural Resources Conservation Service, Bureau of Land Management, Rural Fireman's Association, Wyoming Game and Fish, Wyoming Department of Environmental Quality, Wyoming Department of Agriculture, Wyoming County Commissioners Association, Wyoming Resource Conservation & Development, Wyoming Timber Industry Association, Wyoming Fire Marshal, and Wyoming Association of Municipalities.



Southeastern Wyoming Tree Enhancement Program

This program is focused on the planting, conservation, and maintenance of forest landscapes in southeast Wyoming. Platte County is planting native trees along a pathway to enhance recreational opportunities, provide shade and a wind protection for users. Goshen County is planting a living snow fence adjacent to a county roadway to increase road safety during the winter months, save snow removal dollars, enhance wildlife habitat, and improve water storage for enhanced forage growth. \$33k was awarded and is being matched by \$33k from the Natural Resources Conservation Service, Southeast Wyoming Resource Conservation & Development, City of Wheatland, Platte County, Wyoming Department of Transportation, National Park Service, Wheatland Area Development Cooperative, Goshen County Conservation Districts, Schools, and Road and Bridge.

PACIFIC ISLANDS



Marshall Islands/ Palau/Federated States of Micronesia/ American Samoa Professional Internships in Pacific Terrestrial Island Ecosystem Management

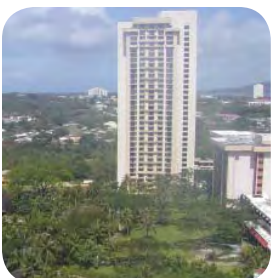
This multi-island project trains professionals to become leaders in terrestrial natural resource organizations. Each Island's strategic plan sets a priority on building local professional capacity to overcome island isolation, limited access to educational and training opportunities, and small staffs. Professional interns enroll in tailored training courses at home community colleges and the University of Hawaii (UH), followed by on-the-job mentoring focusing on: 1) enhanced benefits from forests by restoration of watersheds, native species, fish habitat and local/agroforestry products, 2) forest conservation in areas threatened by road building and development, 3) forest protection from fire, invasive plant species and uncontrolled exploitation, and 4) enhanced opportunities for education and ecotourism. This program supports the Micronesian Challenge, whereby the governments of the Micronesian countries have committed to effectively conserving 20% of the terrestrial and 30% of the near shore marine environment.



\$381k was granted and is matched and leveraged with \$550k from the Institute of Pacific Islands Forestry; The Nature Conservancy; Conservation Society of Pohnpei; Micronesia Conservation Trust; University of Hawaii; Palau Conservation Society; Palau Bureau of Agriculture; Pohnpei Department of Lands & Natural Resources, Division of Forestry & Marine Conservation; Kosrae Island Resource Management Authority; Kosrae Conservation & Safety Organization; Yela Environmental Landowners' Association; American Samoa Community College; Hawaii Division of Forestry and Wildlife; Yap Department of Resources & Development, Division of Forestry & Agriculture; Chuuk Department of Agriculture; College of Micronesia; University of the South Pacific; the Marshall Ministry of Resource Development; and other groups and landowners.

Guam Pacific Area Urban & Community Forestry Conference

The grant supports a week-long conference on community forestry for landscapers, utility agencies, developers, resource land managers, urban planners, engineers, and military officials with the following modules: 1) Building with Trees, 2) Green Infrastructure, 3) Tree worker certification, 4) Native species use in urban landscaping, and 5) ISA Certified Arborist training. \$35k was granted with \$35k in matching funds from the Guam Visitors Bureau, First Lady of Guam Beautification Task Force, Guam Power Authority, Guam Public Works, The Nature Conservancy, Guam Coastal Zone Management, Guam Environmental Protection Agency, Guam Nurserymen's Association, Guam Chamber of Commerce, Guam Hotel & Restaurant Association, and Hagatna Restoration Authority.



PACIFIC ISLANDS (CONTINUED)

Savanna Restoration with Native Species

This project initiates a partnership with the Palau Conservation Society and the newly-established watershed partnerships to develop a community-based watershed restoration plan. The project is using traditional knowledge and FIA analysis to determine appropriate species for planting, as well as collect, propagate and outplant native seedlings on approximately 30 acres of land in the Ngerikiil watershed. This project is helping to identify viable alternative species for restoration efforts. Fire prevention, improved road drainage, and erosion control will also be addressed. This is a critical element for implementation of the Micronesia Challenge. \$32k has been granted and is being matched with \$32k in funds from the Airai Community, Palau Conservation Society, Ngerikiil Watershed Working Group, The Nature Conservancy, Micronesia Conservation Trust, and the Natural Resources Conservation Service.



Protecting Ecosystem Integrity in Pohnpei's Watershed Forest Reserve

The protection of Pohnpei Watershed Forest Reserve is one of the highest priority areas for conservation. This project and the activities of the Conservation Society of Pohnpei (CSP) are in support of the Pohnpei State Biodiversity Strategic Action Plan (BSAP) in addressing the invasive species problem in Pohnpei. The goal is to achieve 100% eradication on four of the five species. \$48,200 was granted and is being matched with \$48,200 in funds from the Pohnpei Department of Lands & Natural Resources, Division of Forestry; Conservation Society of Pohnpei, Pohnpei Invasive Species Task Force and Secretariat of Pacific Community.



Agroforestry Outreach/Extension Addressing Priority Natural Resource Concerns

This is a three-year project focusing on three priority areas: 1) native Samoan "working" plant species, 2) native and non-native fruit trees of current or potential economic importance and 3) native Samoan tree species recommended for coastal and stream bank stabilization. The application of Best Management Practices and propagation science will extend knowledge to six targeted villages. Outcomes include the conservation, protection, and enhancement of at least ninety acres of forest lands. \$50k was granted and is being matched with \$50k in funds from the American Samoa Community College-Division of Community and Natural Resources Forestry Program, the Natural Resources Conservation Service-American Samoa Field Office and the American Samoa Resource Conservation and Development Council, Inc.



PUERTO RICO

Urban Forest Workshops and Community Integration

This project will result in a planned program to involve communities in the conservation of urban forest and open spaces as well as promote healthier communities. The communities of San Patricio and Piñones are with upland and coastal forest respectively. The program will foster neighborhood involvement in beautification, safety, forest health and environmental education activities. The forests will be promoted as school and community resources as well as center for resident recreation and host to "green job" opportunities. Community recognition and/or certification programs will be a part of this. This project is a pilot that will result in an Urban Forest Workshop methodology to be used in other communities around Puerto Rico. The last year of this three year project will involve evaluation of the methods and performance of the project by third parties. This \$475k project received \$225k in federal funding during FY08.



Forest Health Assessment and Management Applications

This two-phase project will involve the first comprehensive synthesis of historical and geo-referenced forest health information in Puerto Rico (including field verification) and establishment of a forest health data base within the state forestry agency. The second phase will result in analysis, public awareness workshops and management based on the findings. This \$200k project will last two years with \$100k provided in federal funds during FY08.

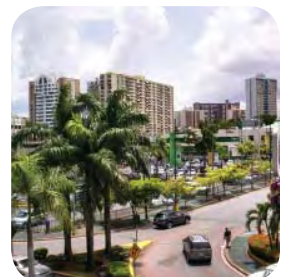


Photo credits:

Alabama Forestry Commission, Colorado Forest Service, Jim Eidson/The Nature Conservancy, City of Greensburg, Georgia Forestry Commission, Getty Images, Joshua Hill, Kentucky Division of Forestry, National Park Service, Natural Resources Conservation Service, Nebraska Forest Service, Oregon Watersheds, Texas Forest Service, U.S. Army Corps of Engineers, U.S. Forest Service, Western Forestry Leadership Coalition, Wildlands CPR

FOR MORE INFORMATION

<http://www.fs.fed.us/spf/redesign/>

Sarah McCreary
National Association of State Foresters
444 N. Capitol St. NW
Washington DC 20001-1512
202.624.5415
nasf@stateforesters.org

Debbie Pressman
USDA Forest Service, S&PF
1400 Independence Ave. SW
Washington DC 20250-1109
202.205.1538
dpressman@fs.fed.us

Jan Davis
Texas Forest Service
301 Tarrow; Suite 364
College Station TX 77840-7896
979.458.6630
jdavis@tfs.tamu.edu