



Engaging Municipalities in Urban and Community Forestry

ACT Summit
April 21, 2010

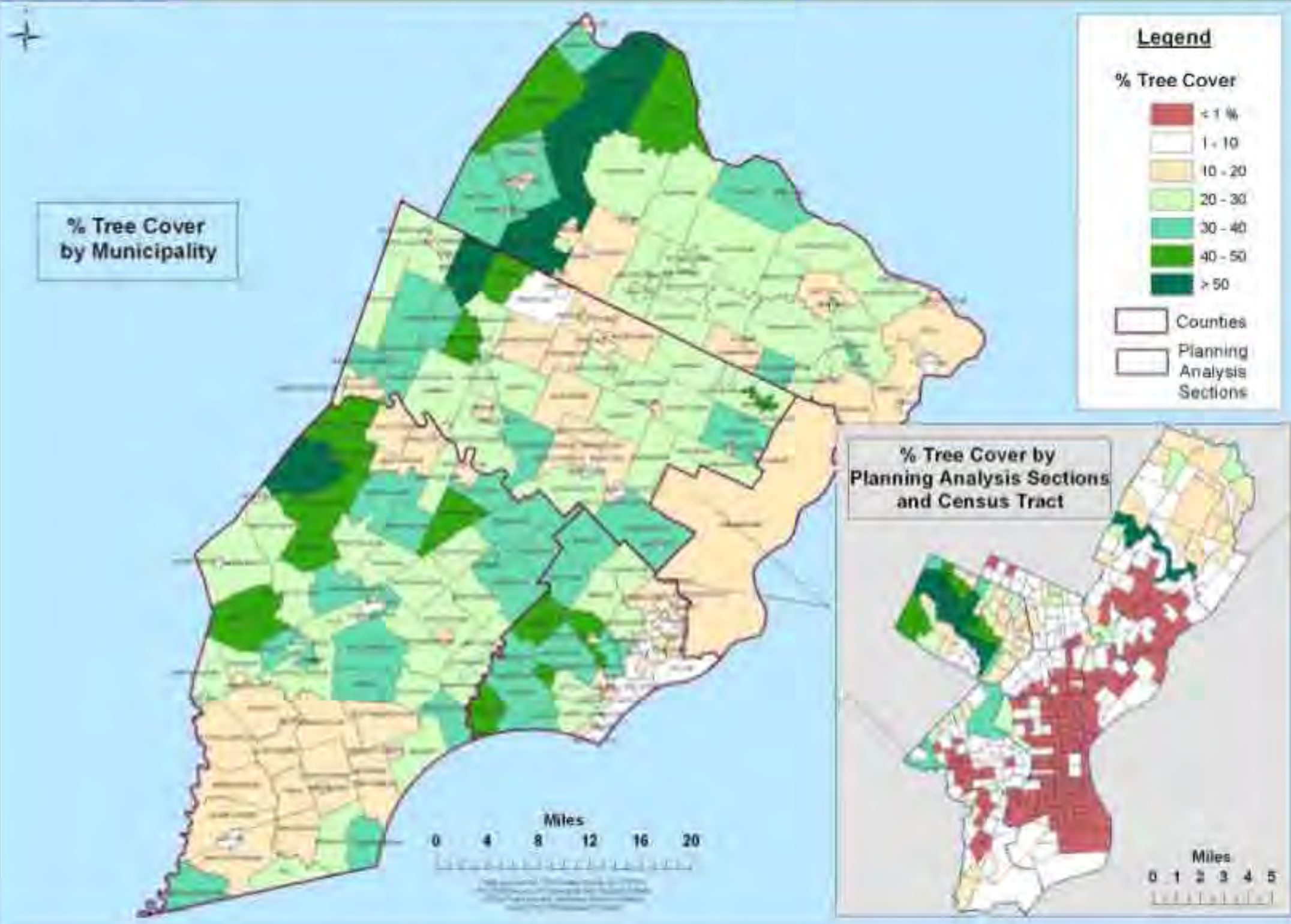
Michael Leff
TreeVitalize Program Manager
Pennsylvania Horticultural Society

mleff@pennhort.org

(215) 988-8795



Percent Tree Cover - Delaware Valley/Philadelphia Five County Region



TreeVitalize Municipalities

- PHS
- Penn State School of Forest Resources
Cooperative Extension
- Delaware Valley Regional Planning
Commission
- PA DCNR Bureau of Forestry
- Morris Arboretum of the University of
Pennsylvania

Money Pit or Money Tree?



Last Money Tree

Ease heat island
Reduce stress
Boost property values
Support retail activity
Elevate mood
Reduce road maintenance
Sequester carbon
Improve roadway safety
Improve municipal health
Provide wildlife habitat
Protect water quality
Increase shopping
Support commercial viability
Reduce stormwater runoff
Clean air
Enhance neighborhood livability
Conserve energy
Counter climate change
Increase sense of safety
Bolster community cohesion
Look pretty

Environmental Benefits of CCD Street Trees (Casey Trees Formula)

Common Name Species	CCD Collection	Avg. DBH	Stormwater Collection gal/year	Electricity Conserved kWh/year	Oil or Natural Gas Consumption Reduction Therms/year	Carbon Sequestration CO2 lbs/year
American Elm	101	10	163,519	7,777	303	32,219
Chinese Elm	28	12	58,884	2,492	56	15,652
English Oak	26	17	78,104	3,250	130	12,038
Ginko	14	6	10,556	546	28	2,464
Hackberry	27	12	62,424	2,727	108	10,557
Hedge Maple	8	10	12,688	576	24	3,184
Homestead Elm	54	17	132,786	3,888	162	30,240
Honey Locust	140	17	596,260	21,840	840	78,400
Japanese Pagoda	43	14	112,617	4,515	172	30,960
Japanese Zelkova	12	14	36,048	1,488	48	5,556
Kentucky Coffee	7	24	53,683	1,603	49	5,327
Kwanzan Cherry	7	10	4,998	280	14	1,435
Little Leaf Linden	13	19	54,730	1,794	65	15,132
London Plane	63	13	167,454	7,119	252	26,901
Other, Deciduous (med.leaf)	68	12	143,004	6,052	204	38,012
Pin Oak	27	13	71,766	3,051	108	11,529
Red Maple	47	10	73,555	2,726	141	11,468
River Birch	8	11	14,752	640	24	3,432
Sawtooth Oak	29	13	68,469	2,813	116	18,560
Swamp White Oak	27	12	62,424	2,727	108	10,557
Total	749	13.3	1,978,721	77,904	2,952	363,623



Restore, Enhance and Protect
The tree canopy of the Nation's Capital

About Us | News & Resources | Support | Donate

Search

Tree Planting | Education | Geographic Resources | Planning & Design

Stay Connected

Text Size Print



Calculate the annual economic and ecological benefits of your tree:

Enter your tree info:

Enter your tree's species:

Enter your tree's diameter (between 2 and 43 inches):

Is your tree in front of a single or multi-family residence?

Calculate

Instructions

Species: If you're looking for a Willow Oak it's listed as "Oak, Willow". If your tree isn't listed at all scroll to the "Other" listings.

Diameter: How wide is your tree at about 4 feet from the ground?

Trees in urban areas provide a number of important environmental and economic benefits. They help to clean the air, curb stormwater runoff, raise property values, sequester carbon, and reduce energy costs.

On this page you can enter information about a tree in front of your house and learn about the specific benefits that tree provides. The results are most accurate when you enter a tree that is alongside the street (rather than deep in your front or back yard).

My tree is not planted near DC. Take me to the [National Tree Benefits Calculator](#)



Understanding This Tool:

The Tree Benefit Calculator allows anyone to make a simple estimation of the benefits individual street-side trees provide. This tool is based on [i-Tree's](#) street tree assessment tool called [STRATUM](#). With inputs of location, species and tree size, users will get an understanding of the environmental and economic value trees provide on an annual basis.

The Tree Benefit Calculator is intended to be simple and accessible. As such, this tool should be considered a starting point for understanding trees' value in the community, rather than a scientific accounting of precise values. For more detailed information on urban and community forest assessments, visit the [i-Tree](#) website.

National Tree Benefit Calculator

Beta

Thank you for choosing this site to calculate the economic and ecological benefits of your tree.

Find your climate zone to get started:

Enter your zip code below:

-OR-

Select a zone from the [map](#)



The National Tree Benefit Calculator was conceived and developed by [Casey Trees](#) and [Davey Tree Expert Co.](#)

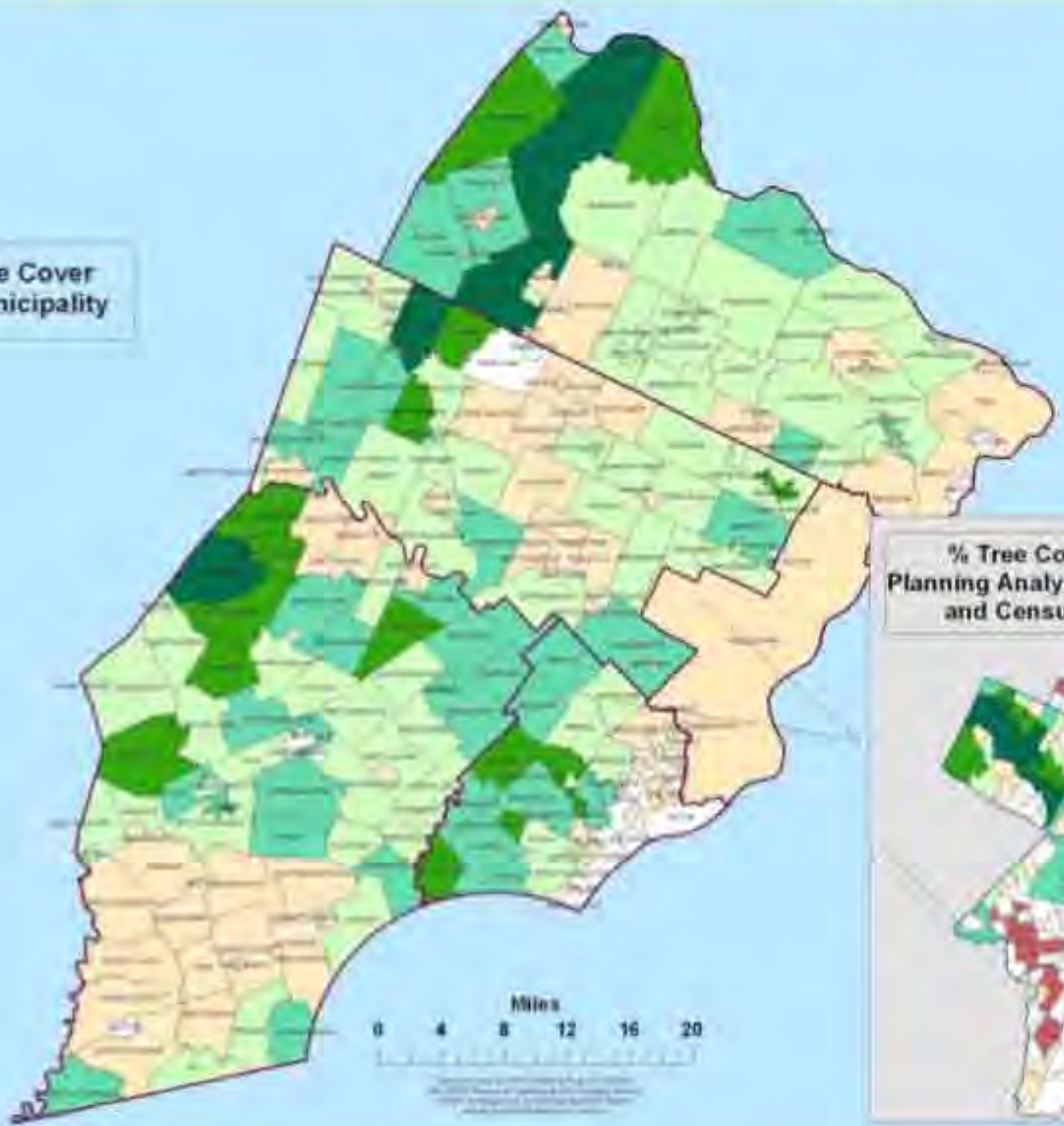




Percent Tree Cover - Delaware Valley/Philadelphia Five County Region



% Tree Cover by Municipality



Legend

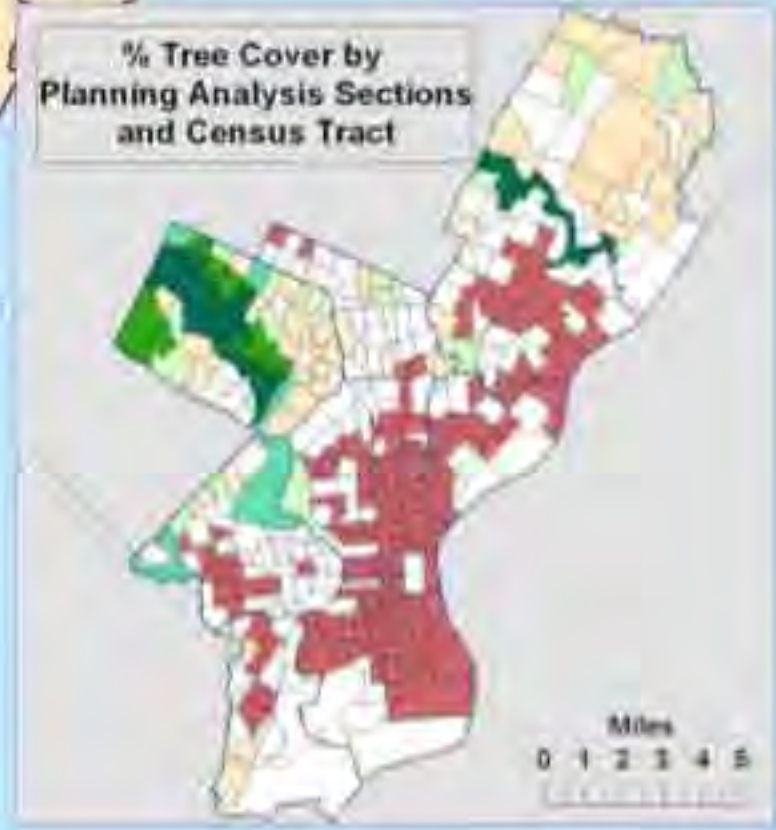
% Tree Cover

- < 1 %
- 1 - 10
- 10 - 20
- 20 - 30
- 30 - 40
- 40 - 50
- > 50

Counties

Planning Analysis Sections

% Tree Cover by Planning Analysis Sections and Census Tract





Managing Natural Resources

A Guide for Municipal Commissions



PENNSSTATE



College of Agricultural Systems
Agricultural Research and Cooperative Extension

Comprehensive Municipal Tree Program

- Tree inventory
- Community tree plan
- Street and park tree ordinance
- Comprehensive plans – zoning and other land use regs
- Development review and approval
- Tree commissions and EACs
- Sustainable funding
- Annual work plans and budgets
- Public participation and education

Regional plan

Activist municipality

Phased approach



Cross-counties, Multi-municipal

Community volunteers

Ongoing effort

**Baltimore Ave Corridor
Revitalization Plan**





Michael Leff
TreeVitalize Program Manager
Pennsylvania Horticultural Society

mleff@pennhort.org

(215) 988-8795

www.PHSONline.org

